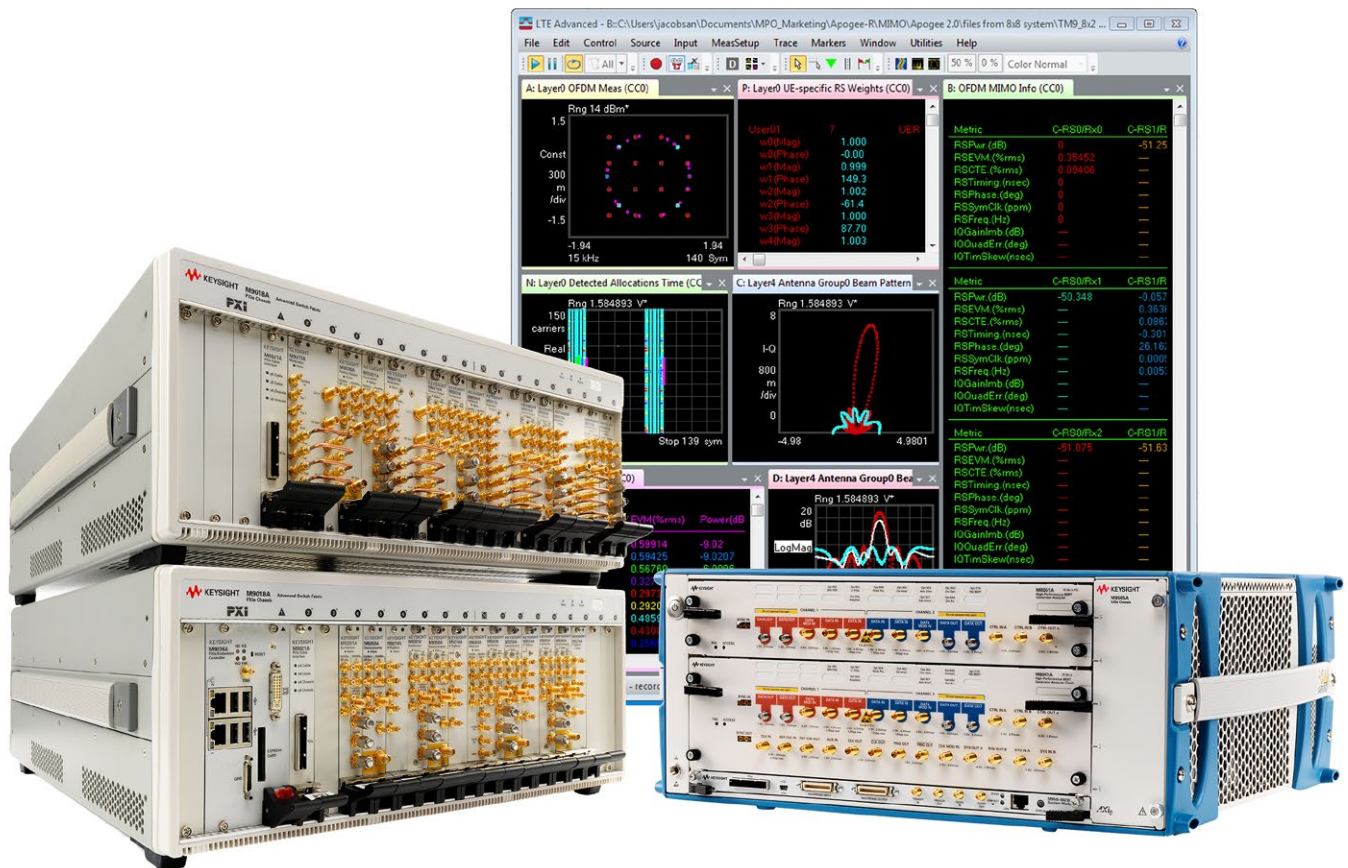


# Keysight Technologies

## PXI and AXIe Products and Solutions

### Catalog

March 2017



## Table of Contents

- 3 Unlocking Measurement Insights
- 4-5 Article: More Test in Less Space: Driving Down the Size of Test
- 6-8 PXI & AXIe Reference Solutions
- 9-11 PXI Chassis & Controllers
- 12-13 PXI Data Acquisition
  - 14 PXI Digital Input Output
  - 15 PXI Digital Multimeters
  - 16 PXI Digitizers
  - 17 PXI Oscilloscopes
- 18-20 PXI Signal Analyzers
  - 21 PXI Signal Generators
- 22-23 7 Tips for PXI and AXIe test solutions
- 24-25 PXI Switches
  - 26 PXI Vector Network Analyzers
- 27-28 PXI Waveform Generators
- 29-32 Additional PXI RF/ $\mu$ W & SMU Modules
- 33-37 AXIe Modular Products
- 38-40 Software & Programming
  - 41 Wireless Test Sets
- 42-43 Index

**KEYSIGHT MODULAR**  
 Unrivaled Performance.  
 Half the Time to Insight.

## Featured Products

M9010A PXIe 10-slot Chassis, Gen3



Meet the demands of your highest performance PXIe modules with industry-leading sound power levels combined with exceptional per-slot cooling.

For more information, see page 9

M9336A PXIe Wideband Arbitrary Waveform Generator up to 1 GHz Bandwidth



Create digitally modulated waveforms up to 1 GHz bandwidth for wideband communication systems and high resolution waveforms for radar and satellite test.

For more information, see page 27

M924xA PXIe Oscilloscopes up to 1 GHz Bandwidth



Troubleshoot random and intermittent signals with advanced probing technology and a 1,000,000 waveforms per second update rate.

For more information, see page 17

FPGA-programmable Arbitrary Waveform Generators & Digitizers



Build onto the instrument's core capabilities or insert custom algorithms using a graphical design environment created for non-programmers.

For more information, see pages 16 & 27

M8040A AXIe 64 Gbaud High-performance BERT



Ensure accurate PAM-4 and NRZ receiver testing while simplifying physical-layer characterization and compliance testing.

For more information, see page 36

## Unlocking Measurement Insights

For more than 75 years, Keysight Technologies, Inc. has been unlocking measurement insights. Along the way, we've created industry-leading test equipment in the shapes and sizes you've asked for: full-size benchtop, small benchtop, handheld and modular. In every form factor, our goal is to deliver the performance your teams need to stay on the leading edge in your industry.



For modular instruments, our hardware innovations are focused in two specific forms: PXI and AXIe. We're putting our unrivaled performance—and consistent measurement science—into the RF, microwave and high-speed digital instruments in our PXI and AXIe portfolio.

To provide time-saving starting points for test system creation, we're documenting Reference Solutions that address specific application areas that range from power amplifier testing to satellite signal monitoring.

Software is an essential element of any test system—and Keysight software is downloadable expertise. From first simulation through first customer shipment, we deliver the tools your team needs to accelerate from data to information to actionable insight. We also provide soft front panels and essential utilities that make our modular products usable within minutes out of the box, ensuring rapid time to first measurement.

Keysight has the industry's largest network of experienced local application engineers covering RF, microwave and digital—and no one can match their cumulative years of experience.

Keysight's three-year standard warranty—worldwide—is our commitment to superior product quality. Our uptime services ensure the ongoing accuracy, performance and availability of your instruments. We can create a customized service plan with response times as fast as four hours. Our network of over 50 service locations worldwide and mobile calibration teams, provide greater convenience and flexibility to keep your products and test systems operating to warranted specifications.

Keysight's modular solutions help you tackle your toughest RF, microwave and digital challenges by delivering unrivaled PXI and AXIe performance. Our foundation is the industry's most accurate measurement science, giving you maximum confidence to achieve your first, best measurement and insight into what's next.

### Keysight Premium Used: Like new. For less.

Keysight Premium Used stands for test and measurement equipment, fully manufacturing to like-new specifications and appearance. In addition to the industry's most comprehensive refurbishment process, you get the same features that come with new equipment - at a much lower price.

Like-new features include:

- Hardware and software options, added at the same savings rate
- Standard accessories and a full calibration
- Keysight's standard 3-year warranty, extendable to 5 years
- Optional 3- or 5-year calibration plan
- Personal support from Keysight and authorized partners.

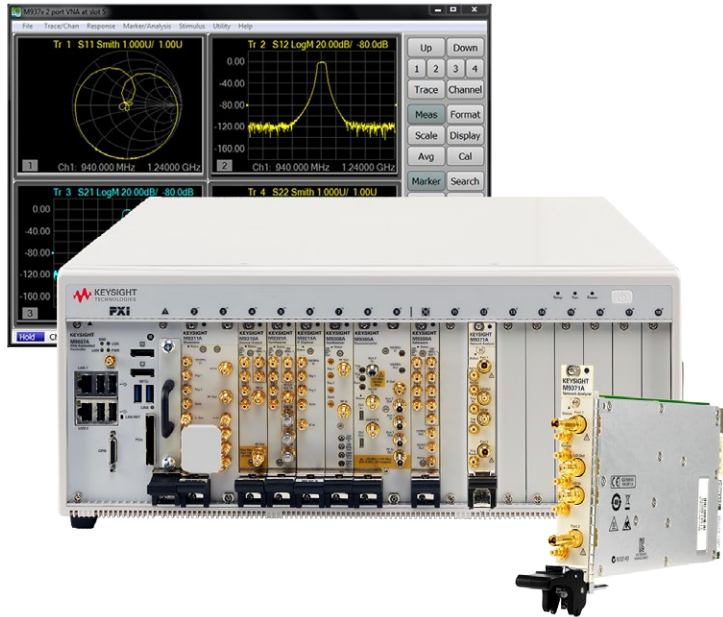


Learn more:

[www.keysight.com/find/kpumodular](http://www.keysight.com/find/kpumodular)

## TEST CHALLENGE: REDUCING SIZE OF TEST SYSTEMS

## More Test in Less Space: Driving Down the Size of Test



As silicon wafers, wireless devices and military systems have increased in complexity, multi-port vector network analysis with S-parameters has become an indispensable tool. A few years ago, vector network analysis with 4-port capability was a common need. A variety of next-generation products then entered the market, requiring 8-port measurements, and some manufacturers responded. The trend continued with the following generation requiring 16-port capability, and 32-port requirements in the near future.

### A three-part test challenge: Reducing the size of VNA test systems while increasing capacity and capability

Along with this trend, many organizations are seeking to drive down the size of test with more capability per cubic inch in their test stations. This is a subset of the larger need to drive down the cost of test to help ensure ongoing profitability as prices erode in wireless communications or as business models change in aerospace and defense.

These long-term trends highlight three specific needs:

- The need to test highly complex devices in much less time without sacrificing accuracy
- The need to test multiple devices—and test in greater numbers—at a single test station
- The need to reduce the size of the test stations used to test multiple wafer sites or complex devices

### The modular solution: Get more into your test system—and get more out of it

Many system developers have implemented multi-function testers within a single PXI chassis. As the chassis fills up, fewer slots are available to incorporate VNA capability. A one-slot PXI vector network analyzer (VNA) is ideal for this situation.

On the production line or in a wafer fab, there is a growing need to test multiple devices or multiple wafer sites at a single test station. Examples include mobile handsets, military radios and increasingly dense silicon wafers. In such situations, one of the key needs is to reduce the overall size of the test solution. The ability to install multiple 2-port PXI VNAs in a single chassis provides a tremendous space reduction when compared to using multiple benchtop analyzers on the production line or alongside a probing station (Figure 1).

As devices become increasingly complex, the need to easily characterize a full set of S-parameters on a large number of ports continues to increase, with 8, 16, or more ports. Examples include RF front-end modules (FEMs), multiple-input/multiple-output (MIMO) antennas, smart antennas and phased-array transceiver modules. Total characterization of an FEM used in mobile handsets requires S-parameter measure-

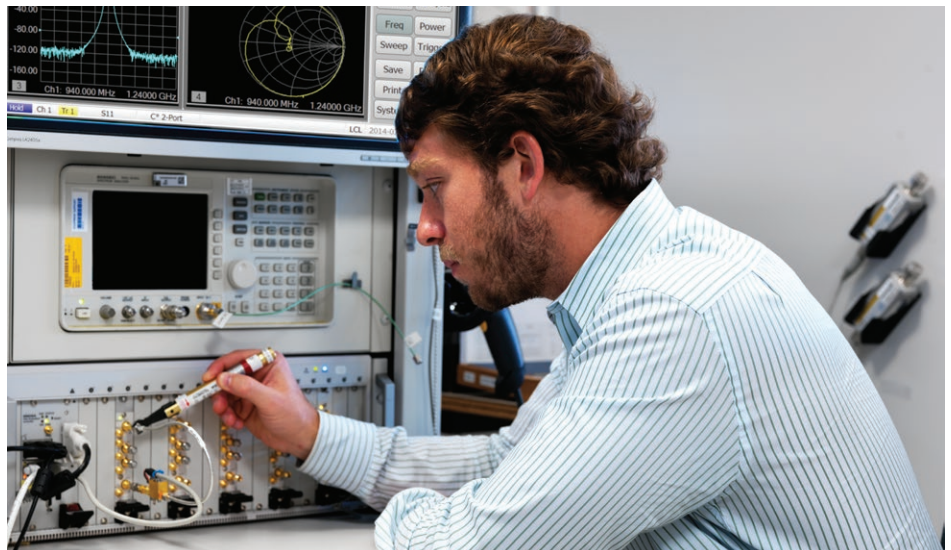


Figure 1. Adding a pair of 2-port PXI VNAs to an existing test station enables powerful device characterization without expanding system height or footprint.

ment on 10 or more ports. In addition, full N-port correction is needed to ensure accurate results.

Engineers designing MIMO antennas need to investigate antenna mutual coupling, which can affect system performance. They can do this through channel measurements, and this entails simultaneous S21 measurements for all combinations of transmit and receive antennas. Here, too, full N-port correction is needed to ensure accuracy.

Whether the focus is on multi-site testing or characterization of multi-port devices, the configuration should be easy to change through software instantiations of “N-port” VNA instruments within a single chassis. For example, a single chassis containing eight 2-port VNAs could be configured as four 4-port VNAs, two 8-port VNAs, one 16-port VNA, or a myriad of other combinations.

### The advantages of VNA true multiport capability

Multiport devices, requiring more than 4 ports, have historically been tested using a series of 2-port measurements combined with signal routing switches. These switching test sets or simple switch trees use VNA measurements with an RF switching matrix to route the VNA ports to the various port pairs of the DUT. The switch tree multiport solution uses a 2-port measurement for each path from the common port. So a 2-port VNA with one common port and one switch port can make all the required measurements.

Since modern devices now include multiple functions with increased complexity they require more thorough multiport characterization of the devices, including more ports and measurements from each port to every other port where the response of any path depends upon the loading or match applied to every other port. Full cross-bar configurations can be used but may be challenging - as every port that is not connected to the VNA needs to be terminated by a switch load.

A true multiport VNA solution is a superior alternative to VNA multiport measurement solutions requiring external switching and additional couplers, offering higher test throughput, a smaller footprint and more.

Keysight offers two true multiport PXI VNAs: M937xA and M9485A. Both have independent sources and each test port has independent reference and test receivers. The true multiport solution eliminates the loss associated with switches, and provides simultaneous data capture with multiple receivers. There is no attenuation between the DUT and measurement receivers resulting in measurements that are both highly accurate and stable. True multiport measurement sweep time, as well as the number of sweeps required for devices, is drastically improved compared to a switch matrix-based solution.

### Ultimate VNA flexibility

Keysight’s M937xA 1-slot PXI VNAs (Figure 2) offer remarkable speed, trace noise, stability and dynamic range. Six models are available, spanning from 300 kHz to 26.5 GHz. The M9485A multiport VNA solution (Figure 3) provides up to 9 GHz with faster measurement speed and wide dynamic range for high-volume manufacturing applications. Flexible and reconfigurable, the M9485A goes from 4-port to 24-ports to easily meet changing test needs.

Keysight’s legacy of measurement science is reflected in the instrument’s hardware design, software algorithms and automated calibration procedures. Our worldwide network of service locations use consistent procedures to ensure your instruments operate to warranted specifications so you maintain ongoing measurement accuracy.

For more information, see page 26.



Figure 2. This versatile multi-port configuration uses eight 2-port PXI VNAs in a single chassis.



Figure 3. New M9485A multi-port VNA.

## PXI & AXIe Reference Solutions

[www.keysight.com/find/solution-modular](http://www.keysight.com/find/solution-modular)

Gain insights faster with Keysight Reference Solutions, proven test systems for specific applications. Developed to solve critical test issues for specific applications, the reference solutions provide a starting point for a test system, including:

- Hardware configurations - PXI, AXIe or benchtop instruments.
- Application software, such as 89600 VSA, Signal Studio and more.
- Open source programming commands provided to perform specific tests and optimize test speed and throughput.

The catalog includes a sample of the reference solutions offered by Keysight. For a complete list visit:

[www.keysight.com/find/solution-modular](http://www.keysight.com/find/solution-modular)



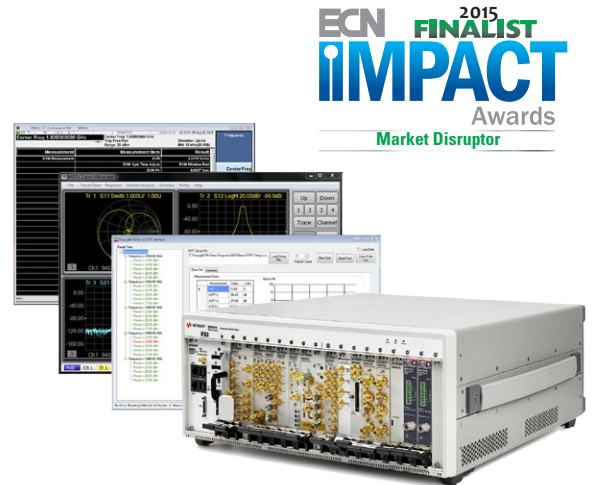
Using Keysight's M937xA PXIe vector network analyzer, M9381A PXIe vector signal generator and M9391A PXIe vector signal analyzer with measurement application software for power amplifier test.

## RF PA/FEM Characterization & Test

[www.keysight.com/find/solution-padvt](http://www.keysight.com/find/solution-padvt)

Rapid, full characterization of next-generation power amplifier modules such as PAD devices, including S-parameter, demodulation, power, adjacent channel power and harmonic distortion measurements are provided by this Reference Solution. Digital pre-distortion and envelope tracking signal generation and analysis are enabled by Keysight's N7614B Signal Studio for power amplifier test software.

- Fast servo loop convergence: < 3 ms
- Fast ACPR measurements: < 500  $\mu$ s
- Fast full 2-port S-parameter measurements: 28-33 ms across 401 points
- Fast DPD open/closed loop measurement: < 70 ms, nominal with M9451A Measurement Accelerator



[www.keysight.com/find/modular](http://www.keysight.com/find/modular)

## 5G Channel Sounding

[www.keysight.com/find/solution-5Gsounding](http://www.keysight.com/find/solution-5Gsounding)

Accelerate 5G channel sounding research with mmWave, ultra-broadband and MIMO solution.

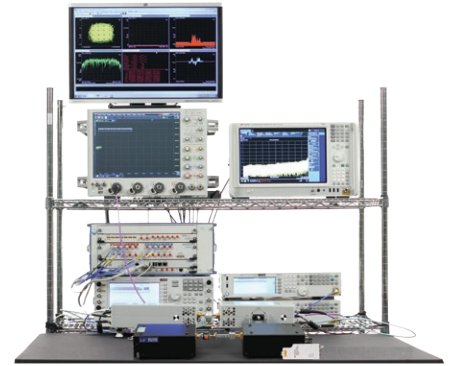
- Fastest data capture with real-time correlation and wideband MIMO channel processing
- System-wide calibrations, precise timing, and synchronization
- Flexible and scalable evolving MIMO channel count
- Tx/Rx up to 44 GHz with 1 GHz bandwidth for 4 or 8 MIMO channel
- Capture multiple, phase coherent channels for real-time processing of Channel Impulse Response (CIR) in on-board FPGAs



## 5G Waveform Generation and Analysis Testbed

[www.keysight.com/find/solution-5Gtestbed](http://www.keysight.com/find/solution-5Gtestbed)

Generate and analyze emerging 5G candidate waveforms at RF, microwave, and millimeter-wave frequencies with modulation bandwidths of up to 2 GHz. The flexible testbed includes a precision AWG, vector signal generator with wideband I/Q inputs and signal-creation software capable of generating wideband test signals with up to 2 GHz of modulation bandwidth at frequencies up to 44 GHz (and higher with upconverters). The 89600 VSA software can be used for signal demodulation and analysis, from inside the simulation software, or on a signal analyzer, oscilloscope or PC.



## LTE/LTE-A Multi-Channel

[www.keysight.com/find/solution-lte](http://www.keysight.com/find/solution-lte)

Quickly set up, measure, visualize and characterize your most complicated multi-channel carrier aggregation, beamforming and MIMO designs. Easily configure and calibrate phase coherent PXIe VSAs, VSGs and software with convenient configuration and calibration utilities.

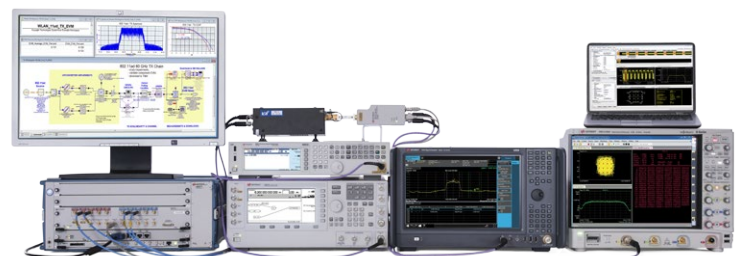
- Frequency range: 1 MHz to 6 GHz
- RF modulation and analysis bandwidth: up to 160 MHz
- Timing alignment:  $\leq 1$  ns, nominal
- Phase alignment:  $\leq 1^\circ$ , nominal
- M9381A PXIe VSG:  $< 0.33\%$  LTE EVM (4x4, 10 MHz BW, 2 GHz)
- M9391A PXIe VSA:  $< 0.36\%$  LTE EVM (4x4, 10 MHz BW, 2 GHz)



## 802.11ad Testbed

[www.keysight.com/find/solution-802.11adtestbed](http://www.keysight.com/find/solution-802.11adtestbed)

Generate and analyze 802.11ad PHY waveforms at baseband, IF, RF and mmWave frequencies. Proven test configurations support up to 2 GHz of modulation bandwidth and up to 90 GHz with millimeter-wave extenders. Gain superior design confidence with pre-corrected waveforms for IQ imbalance and overall channel response using Keysight's 81199A Wideband Waveform Center.



## Multi-Channel Antenna Calibration

[www.keysight.com/find/solution-mac](http://www.keysight.com/find/solution-mac)

Ensure accurate, calibration and modifications for narrow-band antenna test systems including scalable channel count, options for downconversion of antenna receive channels, selectable analysis bandwidth and choice of RF/ $\mu$ W sources and LO.

- Frequency range: DC to 40 GHz
- Narrow-band analysis bandwidth with DDC: 300 MHz to < 1 kHz, adjustable
- Non-decimated bandwidth: 600 MHz
- Channel to channel phase coherence: < 1°



## Satellite Signal Monitoring

[www.keysight.com/find/solution-satsigmon](http://www.keysight.com/find/solution-satsigmon)

With this fast, flexible, compact and cost effective Reference Solution, you can monitor large blocks of spectrum and perform precise digital modulation analysis with increased configuration flexibility for validating satellite signal integrity.

- Spectrum analysis frequency range: 9 kHz to 50 GHz
- Frequency span: selectable, 800 Hz to full HW frequency range
- Spectrum analysis scan rate, single scan: > 280 GHz/sec, nominal
- Sweep modes: continuous, single, time-gated

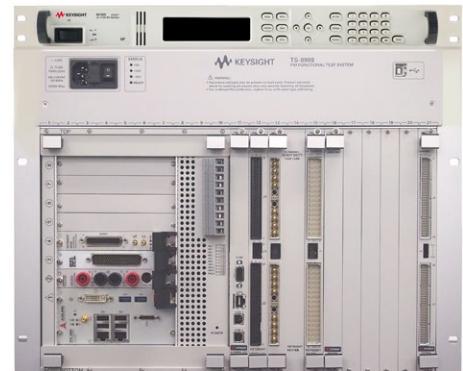


## Automotive Functional Test

[www.keysight.com/find/ts8989ref](http://www.keysight.com/find/ts8989ref)

This unique, flexible test configuration is designed for reliable automotive body and safety testing. It features 8 PXI slots and 11 slots of sensor signal emulation, waveform analysis, discrete input switching or high-power load switching for a complete functional test solution in a compact space.

- Load switching: current handling of 2 to 40 A, up to 48 channels per card
- Pin matrix channels: up to 64 channels per card
- Analog input channels: 30 V, 16 channels, voltage and current output
- Data acquisition:  $\pm 250$  V, 2 channels, 20 MSa/s, achievable with LXI digitizer L4532A/L4534A



## Radio Test

[www.keysight.com/find/solution-radiotest](http://www.keysight.com/find/solution-radiotest)

This complete, efficient and cost-effective radio test solution provides RF and audio signal generation and analysis with a combination of PXI hardware and software in a single, flexible, scalable chassis with the same look and feel as a benchtop instrument. It delivers standard Tx and Rx quality measurements such as modulation quality, hum and noise, sensitivity and audio quality (SINAD, THD).





# PXI Chassis & Controllers

[www.keysight.com/find/pxi-chassis](http://www.keysight.com/find/pxi-chassis)

## Meet our new family of PXI chassis ranging from low-cost to high-performance

Because one-size does not always fit all, we developed a series of chassis to meet different needs. Our high-performance Gen3 chassis, available in 10-slot and 18-slot sizes provide a superior, high-speed platform for R&D and multi-channel applications. Our popular Gen2 18-slot chassis has been updated to provide more power for next generation PXIe modules. And, finally, we are offering a low-cost, portable 5-slot chassis with an integrated system module.

### Multi-chassis configurations

Choose from M9022A, M9023A or M9024A system modules to build multi-chassis systems. Up to four chassis can be connected together depending on the controller and operating system used. Various configurations are possible including cascade and star topologies.

### Tested computer list

For a list of supported and tested PCs and embedded controllers, please see literature number **5990-7632EN**.

## Keysight M9010A/19A

### PXIe Gen3 Chassis 10-slot & 18-slot

[www.keysight.com/find/m9010a](http://www.keysight.com/find/m9010a)

[www.keysight.com/find/m9019a](http://www.keysight.com/find/m9019a)



The M9010A/19A PXIe chassis, Gen3 offer maximum data bandwidth of 8 GB/s per slot, with individual x8 PCIe links. The 2-link system slot has a maximum data bandwidth of 24 GB/s when all 24 PCIe lanes are used.

Technical overview	M9010A	M9019A
Module compatibility	PXIe, PXI-Hybrid, PXI-1 (J1 only, cPCI (J1 only)	
Number of slots	10 total, 8 hybrid, 1 PXIe system, 1 PXIe timing	18 total, 16 hybrid, 1 PXIe system, 1 PXIe timing
Backplane fabric	Gen3 (PCIe 3.0)	Gen3 (PCIe 3.0)
Data bandwidth	24 GB/s max (system slot), 8 GB/s max (slot to slot)	
Usable DC module power	470 W (100-120 V) 830 W (220-240 V)	650 W (100-120 V) 800 W (220-240 V)
Power dissipation	140 W (system slot), 42 W per slot (depending on configuration)	
Multi-chassis power sync	Yes	Yes
Front panel trigger ports	Yes	Yes

## Keysight M9005A/18B PXIe Chassis 5-slot & 18-slot

[www.keysight.com/find/m9005a](http://www.keysight.com/find/m9005a)  
[www.keysight.com/find/m9018b](http://www.keysight.com/find/m9018b)



Keysight offers a M9018B Gen2 and M9005A Gen1 chassis. The 18-slot M9018B delivers 16 hybrid slots with industry-leading usable DC power and cooling per slot. It's ideal for large systems when Gen3 performance isn't required. The M9005A PXIe 5-slot chassis, Gen1 is perfect for small, low-cost, low channel count test applications.

Technical overview	M9005A	M9018B
Module compatibility	PXIe, PXI-Hybrid, PXI-1 (J1 only), cPCI (J1 only)	
Number of slots	5 total, 2 PXIe, 3 hybrid	18 total, 16 hybrid, 1 PXIe controller, 1 PXIe timing
Backplane fabric	Gen1 (PCIe 1.0)	Gen2 (PCIe 2.0)
Data bandwidth	250 MB/s slot to slot	8 GB/s system slot 4 GB/s slot to slot
Usable DC module power	150 W	100-120 V: 708 W 220-240 V: 858 W
Power dissipation	38 W per slot	140 W system slot, 42 W per slot, depending on configuration
Multi-chassis power sync	No	Yes
Front panel trigger ports	No	Yes

## Keysight M9036-37A PXIe Embedded Controller, Gen2 and Gen3

[www.keysight.com/find/m9036a](http://www.keysight.com/find/m9036a)  
[www.keysight.com/find/m9037a](http://www.keysight.com/find/m9037a)



Keysight offers the M9036A Gen2 and M9037A Gen3 embedded controllers. The high performance M9037A is designed for complex, multi-channel and multi-chassis systems. It offers a removable 240 GB solid state drive for secure environments. Built upon the high-performance Intel i7-4700EQ 2.4 GHz Quad-core processor with hyper-threading technology and low power consumption, it is ideal for complex test applications.

Technical overview	M9036A	M9037A
Size	3-slot	4-slot
CPU	Intel dual-core i5-520E (2.4 GHz) 2244 Passmark	Intel quad-core i7-4700EQ (2.4 GHz) 7417 Passmark
Memory and storage	4 GB std, 8 GB max (1,066 MHz) 160 GB SSD	4 GB std, 16 GB max (1,600 MHz) 240 GB SSD
Removable SSD	No	Yes
Backplane link	2x8 or 4x4 (Gen2 backplane link, Gen1 CPU link)	1x8, 1x16, or 4x4 (Gen3)
Front panel link	ExpressCard x1	x8 (Gen2)
Backplane link speed max	4 GB/s peer-to-peer <sup>1</sup> 2 GB/s from CPU to module slot	16 GB/s system (Gen3) 8 GB/s (Gen2)
I/O	USB (4), 10/100/1000/LAN (2), DVI, GP-IB	USB 3.0 (2), USB 2.0 (4), 10/100/1000/LAN (2), DisplayPort (2), PCIe x8, GP-IB

1. 2x8 mode used with M9018B for peer-to-peer without involving CPU, link to CPU is Gen1.

## Keysight PXIe interface modules and host adapters

### Keysight M9021A

#### PCIe Cable Interface, Gen2

[www.keysight.com/find/m9021a](http://www.keysight.com/find/m9021a)



The M9021A PCIe cable interface provides a Gen2 link between the M9018B PXIe chassis, Gen2 and an external host computer.

#### Technical overview

Size	1-slot 3U
PCIe link configuration	Gen2 x8 link
Data bandwidth (max)	4 GB/s to external controller 4 GB/s to M9018B backplane
Front panel connector	x8 PCIe cable connector
Front panel indicators	LEDs for PCIe lane status
Power consumption	5 W (typical)
Cable length	Up to a 2-meter passive cable supported
Only supported in the M9018B	

### Keysight M9022-24A

#### PXI Single and Dual Port System Modules, Gen3

[www.keysight.com/find/m9022a](http://www.keysight.com/find/m9022a)

[www.keysight.com/find/m9023a](http://www.keysight.com/find/m9023a)

[www.keysight.com/find/m9024a](http://www.keysight.com/find/m9024a)



The M9022A, M9023A and M9024A interface modules provide Gen3 links to a Gen3 chassis and Gen2 links to a Gen2 chassis. Configure high-performance links to a single computer, multiple chassis, or from AXIe chassis to PXI chassis. The M9024A adds I/O connectivity with a single cable connection to the host PC.

#### Technical overview

Technical overview	M9022A	M9023A	M9024A
Size	1-slot	1-slot	3-slot <sup>1</sup>
PXIe backplane	Gen3 4x4 or x8, x16		Gen3 4x4 or x8, x16
PCIe cable link	Gen3 x8		Gen3 2x8 or x16
Data bandwidth (max)			
To external PC	8 GB/s		16 GB/s
To PXIe backplane	8 GB/s (Gen3)		16 GB/s (Gen3)
Between chassis	N/A		8 GB/s (Dual x8 mode)
Front panel connector	1 x8 PCIe iPass	2 x8 PCIe iPass	2 x8 PCIe iPass, GP-IB, 2 USB 3.0, 4 USB 2.0, 2 RJ45 (GbE)
Power consumption	27.5W (max) 2A at 12V, 1A at 3.3V, 0.05A at 5V <sub>AUX</sub>	33.5W (max) 2.5A at 12V, 1A at 3.3V, 0.05A at 5V <sub>AUX</sub>	67.7W (max) 4.4A at 12V, 2.5A at 3.3V, 0.5A at 5V <sub>AUX</sub>

1. Uses 2 controller expansion slots.

### Keysight M9048A/B, M9049A

#### PCIe Host Adapters

[www.keysight.com/find/m9048a](http://www.keysight.com/find/m9048a)

[www.keysight.com/find/m9048b](http://www.keysight.com/find/m9048b)

[www.keysight.com/find/m9049a](http://www.keysight.com/find/m9049a)

#### Technical overview

Technical overview	M9048A	M9048B	M9049A
Card format	PCIe half-card	Low profile	Standard profile
PCIe cable link	Gen2 x8	Gen3 x8	Gen3 2x8 or x16
Slot compatibility	x8 and x16, Gen1, 2, or 3	x8 Gen 2/Gen 3, x16, Gen 2/Gen 3	x16, Gen 2/Gen 3
Data bandwidth (max)	4 GB/s	8 GB/s	16 GB/s (x16 mode)
Connector	x8 PCIe IPASS cable connector	One x8 PCIe iPass cable connector	Two x8 PCIe iPass cable connector
Power consumption	7 W (typ)	9 W (max) 0.68 A at 12 V, 0.33 A at 3.3 V	16.8 W (max) 1.4 A at 12 V

## PXI Data Acquisition

[www.keysight.com/find/pxi-data-acquisition](http://www.keysight.com/find/pxi-data-acquisition) | [www.keysight.com/find/pxi-converters](http://www.keysight.com/find/pxi-converters)

### Keysight M9185A

#### PXI 8/16-Channel Isolated D/A Converter

[www.keysight.com/find/m9185a](http://www.keysight.com/find/m9185a)



The M9185A is a fully independent, isolated digital/analog converter (D/A converter) that is capable of supplying high-voltage levels in parallel of up to 8 or 16 channels. Each channel is able to output up to 16 V as stimulus signals to device under tests (DUTs). The M9185A also provides a built-in SENSE mechanism, which detects output voltage levels and feeds the information to the circuitry of the converter to compensate for the voltage drop at the receiving end of a DUT. This feature ensures the accuracy of the stimulus signals being provided to the DUT for better test performance.

#### Technical overview

Size	2-slot for 8-channel, 3-slot for 16-channel, 3U		
	<b>Range</b>	<b>Resolution</b>	<b>Accuracy</b>
DC voltage	$\pm 16$ V up to 10 mA	16-bit = 500 $\mu$ V	$\pm (0.05\% + 3.0$ mV)
DC current	$\pm 20$ mA	16-bit = 630 nA	$\pm (0.09\% + 5.0$ $\mu$ A)
Temperature range	Operating: 0° C to 55° C Storage: -40° C to 70° C		
Relative humidity	80%, 0° C to 40° C (non condensing)		

### Keysight M9186A

#### PXI Isolated Single Channel Voltage/Current Source

[www.keysight.com/find/m9186a](http://www.keysight.com/find/m9186a)



The M9186A 2-slot, PXI V/I source module enables the sourcing of a voltage or current to perform measurements on the resultant current or voltage through another module. It consists of two separate amplifiers – one low voltage and one high-voltage – that share a common output connection. Both amplifiers can sense the amount of current flowing while forcing a constant voltage.

A unique safety interlock feature automatically disables the high-voltage amplifier and opens all relays when the interlock circuit is broken, providing protection to the DUT during the presence of high voltages.

#### Technical overview

Size	2-slot, 3U		
Resolution	16-bit		
Accuracy	$\pm 16$ V up to 200 mA: 0.02% + 3 mV -10 to + 100 V at up to 20 mA: 0.02% + 40 mV		
<b>Voltage source accuracy (% of output + offset)</b>			
16 V range	Up to 200 mA 0.02% to 3 mV		
<b>Current source accuracy (% of output + offset)</b>			
$\pm 200$ mA range	0.3% + 500 $\mu$ A (over $\pm 16$ V)		

## Keysight M9188A

### PXI Dynamic Analog Output

[www.keysight.com/find/m9188a](http://www.keysight.com/find/m9188a)



M9188A is a PXI, 1-slot 16-channel analog output capable of supplying typical waveforms at high voltages. High-voltage sensor emulation, such as for automotive electronic control unit functional testing, are addressed with the M9188A's output voltage of 0 V to +30 V preventing the need for additional signal conditioning circuitries. Its dynamic current source signal up to +20 mA simulates Hall effect sensors, such as the wheel speed sensor in transmission control unit test.

#### Technical overview

Size	1-slot, 3U
Resolution	16 bit
Number of isolated banks	4 (4 channels in each bank)
Output polarity	Unipolar
Output voltage/current	0 to +30 V 0 mA to +20 mA
Memory	1 MSa/channel
Update rate/channel	500 kSa/s

## Keysight M9216A

### PXI 32-channel High Voltage Data Acquisition

[www.keysight.com/find/m9216a](http://www.keysight.com/find/m9216a)



The M9216A is a high-voltage data acquisition module that allows simultaneous measurement of eight channels of positive voltages ranging from 1 mV to 100 V. Each channel in the module comes with concurrent 5 and 100 V measurement ranges – each channel capable of acquiring digital signals that fluctuate between very low and very high-voltage levels without switching ranges and doing separate measurements.

The built-in 4 to 8 multiplexer enables 32 measurement ports to be connected to the 8 acquisition channels expanding it to a full 32-channel acquisition module. The fast parallel voltage level measurements with guaranteed accuracy is ideal for the automotive applications. The 16-bit ADC enhances the resolution and accuracy.

#### Technical overview

Size	2-slots, 3U
Resolution	16 bit
Accuracy	Zero offset: 5 V range – 200 $\mu$ V, 100 V range – 1 mV Gain (% of reading): 5 V range – 0.05%, 100 V range – 0.05% Noise at 3 sigma: 5 V range – 200 $\mu$ V, 100 V range – 2 mV

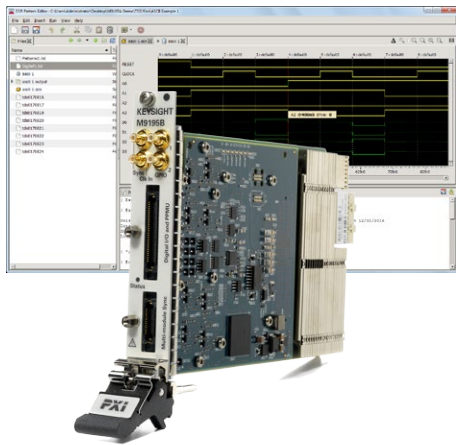
## PXI Digital Input Output

[www.keysight.com/find/pxi-dio](http://www.keysight.com/find/pxi-dio)

### Keysight M9195B, M9192A/93A

#### PXIe Digital Stimulus/ Response with Pattern Editing Software

[www.keysight.com/find/m9195b](http://www.keysight.com/find/m9195b)



The M9195B digital stimulus/response (DSR) provides speed, configuration flexibility and multi-site capability for RF chipset emulation and device characterization. The DSR synchronizes up to 12 modules or 192 channels. With the M9192A or M9193A DSR pattern editing software packages, the M9195B offers high performance, time saving per channel parametric measurements, programmable delay and more.

The M9192A DSR pattern editor software and M9193A pattern editor software with data converters enable engineers to create and edit waveform patterns. The M9193A software enables import of patterns created by automatic test program generators.

#### Technical overview - M9195B

Maximum pattern rate	250 MHz
Number of channels per module	16 bidirectional, 4 high-voltage, 4 open drain
Data channel configuration (per pin/ per cycle)	Delay, direction, PPMU, logic levels
Vector memory	Up to 125 M vectors per channel
Edge placement resolution	1 ns minimum

### Keysight M9187A PXI Digital I/O

[www.keysight.com/find/m9187a](http://www.keysight.com/find/m9187a)



The M9187A digital I/O control module has 32 input/output channels. The input channels can be used for comparing inputs to user-defined thresholds between 0.3 and 50 V, with 12.5 mV setting resolution. Each input is protected up to 100 V. The 32 output channels can drive high or low outputs, and are capable of sourcing 0.4 A from the high-side or sink 0.5 A from the low-side of each channel. These outputs are protected against over-voltage or over-current conditions.

#### Technical overview

##### Input specifications

Input impedance	1 M $\Omega$
Max input voltage (typ)	+50 Vpk, with 100 Vpk over voltage protection
Thresholds	Dual programmable 0.3 to 50 V, 12.5 mV resolution

##### Output specifications

Max voltage (typ)	+50 Vpk
Max current	0.5 A for low-side drivers, 0.4 A for high-side drivers 10 A module total
Output states	Driven high, driven low, or off
Low-side driver output voltage	0.3 V at $I_{sink} = 0.5$ A
High-side driver output voltage	Vext - 1.5 V at $I_{source} = 0.4$ A

# PXI Digital Multimeters

[www.keysight.com/find/pxi-dmm](http://www.keysight.com/find/pxi-dmm)

## Keysight M9181A PXI Basic DMM

[www.keysight.com/find/pxi-dmm](http://www.keysight.com/find/pxi-dmm)



The M9181A 6½ digit PXI digital multimeter (DMM) offers the most common measurement functions at an affordable price. The M9181A provides six built-in measurement types with all the reliability and stability you would expect from a Keysight PXI DMM.

Measurement ranges	
DCV, ACV; 4 ranges	200 mV to 200 V
DCI, ACI; 4 ranges	2 mA to 2 A
2- and 4-wire resistance; 6 ranges	200 Ω to 20 MΩ

Function	Lowest range	Sensitivity
DCV	200.0000 mV	100 nV
ACV	200.0000 mV	100 nV
Resistance	20.0000 Ω	100 μΩ
DCI	2.000000 mA	10 nA
ACI	2.000000 mA	1 nA

## Keysight M9182A, M9183A PXI High Performance DMMs

[www.keysight.com/find/pxi-dmm](http://www.keysight.com/find/pxi-dmm)



The M9182A and M9183A 6½ digit high-performance PXI digital multimeters offer fast development, fast operation, and reliable results. The M9182A provides nine built-in measurement types with all the accuracy and stability you would expect from a Keysight 6½ DMM. The M9183A provides the same capabilities as the M9182A plus market-leading measurement speed, additional range and advanced triggering.

Measurement ranges	M9182A	M9183A
DCV, ACV	200 mV to 300 V	200 mV to 300 V
DCI	2 mA to 2 A	200 nA to 2 A
ACI	2 mA to 2 A	2 mA to 2 A
2 & 4-wire resistance	200 Ω to 20 MΩ	20 Ω to 200 MΩ
Frequency/period	1 Hz to 300 kHz	1 Hz to 300 kHz
Capacitance	1 nF to 10 mF	1 nF to 10 mF
Temperature	Thermocouple (B, E, J, K, N, R, S, T), RTD (6 types), Thermistor (2.25 kΩ, 5 kΩ, 10 kΩ)	

Function	Lowest range	Sensitivity
DCV	200.0000 mV	0.1 μV
ACV	200.0000 mV	0.1 μV
Resistance (M9183A)	20.00000 Ω	10 μΩ
DCI (M9183A)	200.0000 nA	0.1 pA
ACI	2.000000 mA	1 nA

[www.keysight.com/find/modular](http://www.keysight.com/find/modular)

## PXI Digitizers

[www.keysight.com/find/pxi-digitizers](http://www.keysight.com/find/pxi-digitizers)

### Keysight M3100A/02A \* PXIe 14-bit FPGA Digitizer

[www.keysight.com/find/m3100a](http://www.keysight.com/find/m3100a)



\* Digitizer/AWG combination units available (M3300/02A)

Non-programmers can customize and accelerate test with FPGA-programmable digitizers while accessing the full performance of the FPGA. Real-time sequencing and multi-module synchronization provide phase coherency for complex configurations.

Technical overview	M3100A/M3300A	M3102A/M3302A
Size	3U, M3100A/M3102A: 1-slot, M3300A/M3302A: 2-slot	
Resolution	14-bit	14-bit
Sample rate	100 MS/s	500 MS/s
Bandwidth	100 MHz (undersampling)	200 MHz
Channels	Up to 8 channels	Up to 4 channels
Impedance	50 $\Omega$ / 1M $\Omega$	50 $\Omega$ / 1M $\Omega$
Coupling	AC / DC	AC / DC
Full-scale (FS) range	Continuous: $\pm 200$ mV to $\pm 3$ V (50 $\Omega$ ) Continuous: $\pm 100$ mV to $\pm 10$ V (1M $\Omega$ )	7 scales: $\pm 62.5$ mV to $\pm 4$ V (50 $\Omega$ ) 7 scales: $\pm 100$ mV to $\pm 8$ V (1M $\Omega$ )
SFDR	79 dBc @ 30 MHz (1.5 Vpp 50 $\Omega$ )	79 dBc @ 95 MHz (1 Vpp 50 $\Omega$ )

### Keysight M9203A PXIe 12-bit FPGA Digitizer, Wideband Digital Receiver

[www.keysight.com/find/m9203a](http://www.keysight.com/find/m9203a)



The M9203A is a dual-slot 3U PXIe 12-bit wideband digital receiver running up to 3.2 GS/s, with up to 2 GHz instantaneous analog bandwidth. It includes a large 4 GB DDR3 acquisition memory and with streaming and recording option, allows up to 320 MHz instantaneous bandwidth.

Technical overview	
Size	2-slot 3U
Resolution	12 bits
Sample rate	Up to 3.2 GS/s
Bandwidth	Up to 2 GHz
Impedance	50 $\Omega$ (nominal)
Coupling	DC
Full scale (FS) range	1 V and 2 V
Spurious-free dynamic range (SFDR)	64 dBc (nominal) at 410 MHz

### Keysight M9217A PXIe 2-channel, High Voltage, Isolated Digitizer

[www.keysight.com/find/m9217a](http://www.keysight.com/find/m9217a)



The M9217A is a high-voltage digitizer offering 2 channels of simultaneous sampling up to 20 MSa/s. For high-voltage applications, such as solenoid drivers, the input channels are able to measure up to  $\pm 256$  V without attenuation. Precise results are achieved with 16-bit resolution and a choice of input ranges.

Technical overview	
Size	1-slot 3U
Resolution	16 bits
Sample rate	20 MS/s
Memory	32 MSa per channel
Isolation voltage	+40 V
11 input ranges	From $\pm 250$ mV to $\pm 256$ V
Programmable sample rates	From 1 kSa/s to 20 MSa/s

[www.keysight.com/find/modular](http://www.keysight.com/find/modular)



# PXI Oscilloscopes

[www.keysight.com/find/pxi-oscilloscopes](http://www.keysight.com/find/pxi-oscilloscopes)

## The Power of a Benchtop Oscilloscope in a Modular Package

The InfiniiVision M924xA Series redefines PXI oscilloscopes. It gives you the most signal detail with maximum investment protection and is built with technology that leverages decades of Keysight's high performance oscilloscope expertise.

### Keysight M9241-43A

#### PXI Oscilloscopes

[www.keysight.com/find/m9241a](http://www.keysight.com/find/m9241a)

[www.keysight.com/find/m9242a](http://www.keysight.com/find/m9242a)

[www.keysight.com/find/m9243a](http://www.keysight.com/find/m9243a)



Many PXI users have been using digitizer hardware with software that simulates an oscilloscope for testing and troubleshooting. The limitations of this approach are often overlooked, but they can cause significant problems. Keysight delivers full-featured M924xA PXIe oscilloscopes with a 1,000,000 waveforms per second update rate. This gives you a higher probability of catching random glitches and provides common oscilloscope measurements - waveform averaging, advanced waveform triggers and more.

Technical Overview	M9241A	M9242A	M9243A
Bandwidth	200 MHz	500 MHz	1 GHz
Calculated rise time (10 to 90%)	≤ 1.75 ns	≤ 700 ps	≤ 450 ps
Input channels	2	2	2
Maximum sample rate	5 GSa/s one channel, 2.5 GSa/s two channels		
Maximum memory depth	Standard 4 Mpts, standard segmented memory		
Waveform update rate	≥ 1,000,000 waveforms/second		
Special triggers	Zone trigger, mask, pulse width, rise/fall time, runt, pattern, nth, burst, video, I2C, CAN, LIN, Manchester and many more		
Key features	Averaging, peak detection, protocol analysis, arbitrary waveform generation, wide variety of probing options		

### Keysight M9240A

#### PXIe AutoProbe

[www.keysight.com/find/m9240a](http://www.keysight.com/find/m9240a)



Keysight offers probing solutions for the most challenging test applications. The M924xA PXIe oscilloscopes support standard 50 Ω or 1 MΩ connections. They also support a wide range of passive and active probes. The M924xA oscilloscopes require the M9240A PXIe AutoProbe power module to use Keysight active probes. The M9240A provides power and the communication circuit required for proper operation of the active probes.

Probes	
N2843A	Passive probe, 500 MHz, 10:1, 1 MΩ, 11 pF
N2870A	Passive probe, 35 MHz, 1:1, 1 MΩ
10076C	Passive probe, 500 MHz, 100:1 (4 kV)
N2804A	300 MHz, 100:1 differential, 4 MΩ, 4 pF, ±300 V DC+peak AC
N2805A	200 MHz, 100:1 differential, 4 MΩ, 4 pF, ±100 V, 5 m cable
N2790A	100 MHz, 50:1/500:1 high voltage differential, 8 MΩ, 3.5 pF, ±1400 V
See data sheet for more probe options	

PXI Oscilloscopes

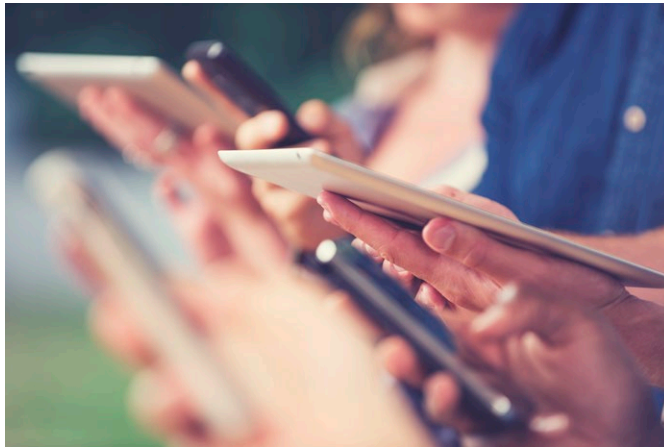
# PXI Signal Analyzers

[www.keysight.com/find/pxi-vsa](http://www.keysight.com/find/pxi-vsa)

Accurately measure signal frequency, amplitude, spurs, phase noise and modulation quality with Keysight's PXI signal analyzers. Perform swept-tuned or FFT-based spectrum analysis to analyze out-of-band signals and vector signal analysis to accurately demodulate and measure in-channel signals.

Keysight's PXI signal analyzers are ideal for applications that require fast, high-quality measurements, such as high-volume manufacturing, where quality control, product conformance and test optimization are essential. Modular solutions offer speed, scalability and repeatability, along with the flexibility to configure a solution with a shared processor, frame/chassis, display and interface.

Benefit from Keysight's measurement expertise, trusted software, and PXI integration to create an application-focused modular solution, including multi-channel or multi-measurement capability. See software section for more details.



## IN THIS SECTION

M9393A PXIe performance vector signal analyzer  
 M9290A CXA-m PXIe signal analyzer  
 M9391A PXIe vector signal analyzer  
 M9421A PXIe VXT vector transceiver

## APPLICATIONS

Aerospace and defense manufacturing and depot test  
 Wireless device design validation and manufacturing

Technical overview	M9393A PXIe Performance VSA	M9391A PXIe VSA	M9421A PXIe VXT	M9290A CXA-m PXIe SA
<b>Performance</b>	★★★★★	★★★★★	★★★★★	★★★
Frequency range	Standard: 9 kHz to 8.4, 14, 18 or 27 GHz Extended: 3.6 to 50 GHz	1 MHz to 3 or 6 GHz	60 MHz to 3.8 or 6 GHz	10 Hz to 3, 7.5, 13.6 or 26.5 GHz
Analysis bandwidth	40, 100 or 160 MHz	40, 100 or 160 MHz	40, 80 or 160 MHz	10, 25 MHz
Overall amplitude accuracy (95%)	±0.25 dB	±0.45 dB	±0.2 dB, typical	±0.6 dB
Dynamic range, max third order at 1 GHz	120 dB	119 dB (at 2 GHz)	--	111 dB
Standard attenuator range/step	42 dB/0.25 dB	70 dB/1 dB	60 dB/1 dB	70 dB/10 dB
Frequency switching	< 135 μs	320 μs	< 400 μs	--
Size	4 slots *	3 slots *	4 slots *	4 slots
Chassis slot compatibility	PXIe Hybrid, PXIe	PXIe Hybrid, PXIe	PXIe Hybrid, PXIe	PXIe Hybrid, PXIe
Channel-to-channel synchronization	Timing alignment: ≤ 1 ns	Timing alignment: ≤ 1 ns Phase alignment: ≤ 1°	--	--

\* Add one slot for M9300A PXIe frequency reference.

[www.keysight.com/find/modular](http://www.keysight.com/find/modular)

## Keysight M9393A

### PXIe Performance Vector Signal Analyzer

[www.keysight.com/find/m9393a](http://www.keysight.com/find/m9393a)



Standard configuration consists of the following four modules: M9214A PXIe IF digitizer, M9308A PXIe synthesizer, M9365A PXIe downconverter and M9300A PXIe frequency reference.

For the extended frequency configuration, option FRX (3.6 to 50 GHz), we recommend adding the M9169E. For more information on the M9169E, see page 30.

The M9393A is the realization of our microwave measurement expertise in modular form. It integrates hardware speed and accuracy with stepped FFT based spectrum analysis to measure harmonics and spurs. The M9393A's extensible modular architecture enables you to tailor your system to fit specific needs today and tomorrow.

- Characterize spurs and harmonics with 27 GHz sweep in 1 second at 10 kHz resolution bandwidth
- Analyze up to 50 GHz with superior DANL, using frequency range extension option
- Quickly test multiple frequencies with tuning as fast as 135  $\mu$ s
- Access up to 800 MHz IF bandwidth with external digitizer (option WB1)
- Compact multi-channel analysis with up to 4 time-synchronous channels in one 18-slot PXI chassis

#### Technical overview

Frequency range	
Standard configuration:	9 kHz to 8.4, 14, 18 or 27 GHz
Extended frequency configuration:	3.6 or 50 GHz
Analysis bandwidth	40, 100, 160 MHz
Absolute amplitude accuracy	$\pm 0.13$ dB
Frequency switching	< 135 $\mu$ s
Displayed average noise level (DANL)	-168 dBm/Hz
Third-order intermodulation (TOI)	+31 dBm

## Keysight M9290A

### CXA-m PXIe Signal Analyzer

[www.keysight.com/find/m9290a](http://www.keysight.com/find/m9290a)



In test system development, one of your crucial requirements is doing more in less space – but this often means tradeoffs between footprint and precision in signal analysis. The Keysight X-Series has been expanded to include the CXA-m, a PXI signal analyzer that offers fully-specified performance up to 26.5 GHz. It lets you handle RF and microwave signals in four slots, and you can leverage your existing code. The CXA-m supports testing of components, boards and systems in a variety of applications.

- Optimize the balance between speed, sensitivity and accuracy with swept and FFT modes
- Achieve precise amplitude accuracy with automatic internal alignment
- Perform fast stimulus response measurements with industry's first modular tracking generator up to 26.5 GHz
- Simplify the transition from box instruments to PXI through code compatibility

#### Technical overview

Frequency range	10 Hz to 3, 7.5, 13.6 or 26.5 GHz
Analysis bandwidth	10, 25 MHz
Absolute amplitude accuracy	$\pm 0.6$ dB (95th percentile)
Displayed average noise level (DANL)	-163 dBm at 1 GHz, typical
Third-order intermodulation (TOI)	+17 dBm, typical

## Keysight M9391A PXIe Vector Signal Analyzer

[www.keysight.com/find/m9391a](http://www.keysight.com/find/m9391a)



In the evolution of modular RF test solutions, the M9391A PXIe VSA is the next logical step in signal analysis. Optimized for RF device design validation and manufacturing test environments, the M9391A delivers proven results faster with raw hardware speed and X-Series measurement applications. Built on a flexible, PXI platform, the M9391A is the low-risk way to manage change.

- Fast amplitude and frequency switching to reduce test time
- Scalable platform fits up to 4 channels in one chassis, and 8 channels in multi-chassis configuration
- Channels time synchronized to within 1 ns and phase coherent to within 1 degree
- Up to 160 MHz analysis bandwidth
- Easily integrate into test environments with IVI-COM, IVI-C, LabVIEW and MATLAB drivers

### Technical overview

Frequency range	1 MHz to 3 or 6 GHz
Analysis bandwidth	40, 100, 160 MHz
Amplitude accuracy	±0.45 dB, typical
RF switching speed	320 μs, nominal (frequency) 136 μs, nominal (amplitude)
Phase noise	-120 dBc/Hz, nominal (1 GHz, 10 kHz offset)
Repeatability	< 0.05 dB, nominal
EVM	-47.5 dB, nominal (2-ch WLAN 802.11ac, 160 MHz)
ACLR	-64.2 dBc, nominal (LTE-FDD, 10 MHz BW)

## Keysight M9421A \* PXIe VXT Vector Transceiver

[www.keysight.com/find/m9421a](http://www.keysight.com/find/m9421a)



The M9421A 4-slot PXIe VXT vector transceiver provides signal generation and analysis with real-time FPGA accelerated measurements for faster throughput in manufacturing test of wireless components, power amplifiers and RF front-end modules. Open source test libraries and reference solutions help to reduce development time. The X-Series measurement applications and Signal Studio software ensure specific wireless standards testability.

Key features include:

- Built-in FPGA accelerated measurements
- Proven power amplifier and front end module test configurations
- Standard specific software for signal creation and analysis
- Real-time FFTs for fast power and adjacent channel power ratio measurements
- Built-in servo routine to set PA output power quickly and accurately
- Supports 802.11ax 8x8 MIMO measurements

Technical overview	Signal generation	Signal analysis
Frequency range	60 MHz to 3.8 or 6 GHz	60 MHz to 3.8 or 6 GHz
Analysis bandwidth	40, 80, 160 MHz	40, 80, 160 MHz
RF switching speed	2 ms	--
Phase noise	-112 dBc/Hz, typical (900 MHz, 10 kHz offset)	-111 dBc/Hz, typical (900 MHz, 10 kHz offset)
Amplitude accuracy	±0.20 dB, typical	±0.20 dB, typical
Output power	-120 to +20 dBm (+25 dBm settable)	--

\* M9420A PXIe VXT is also available new and as a premium used product.

# PXI Signal Generators

[www.keysight.com/find/pxi-vsg](http://www.keysight.com/find/pxi-vsg)

## Keysight M9381A PXIe Vector Signal Generator

[www.keysight.com/find/m9381a](http://www.keysight.com/find/m9381a)



Optimized for RF device design validation and manufacturing test environments, the M9381A PXIe vector signal generator delivers a combination of speed, performance, and multi-channel capability. Built on a flexible, scalable modular platform, the M9381A is the low-risk way to manage change and be ready for tomorrow—today.

- Fast amplitude and frequency switching to reduce test time
- Scalable platform fits up to 4 channels in one chassis, and 8 channels in multi-chassis configuration
- Channels time synchronized to within 1 ns and phase coherent to within 1 degree
- Up to 160 MHz RF bandwidth
- Easily integrate into test environments with IVI-COM, IVI-C, LabVIEW, and MATLAB drivers

Consists of the following four modules: M9311A PXIe digital vector modulator, M9310A PXIe source output, M9301A PXIe synthesizer and M9300A PXIe frequency reference.

## Keysight M9380A PXIe CW Source

[www.keysight.com/find/m9380a](http://www.keysight.com/find/m9380a)



With high output power and accurate amplitude control, the M9380A PXIe CW source is a compact, cost-effective analog source, ideal for LO substitution, interference injection, and wireless component test. With fast PXI architecture and multiple drivers and programmatic interfaces, the M9380A is designed for high-speed automated test.

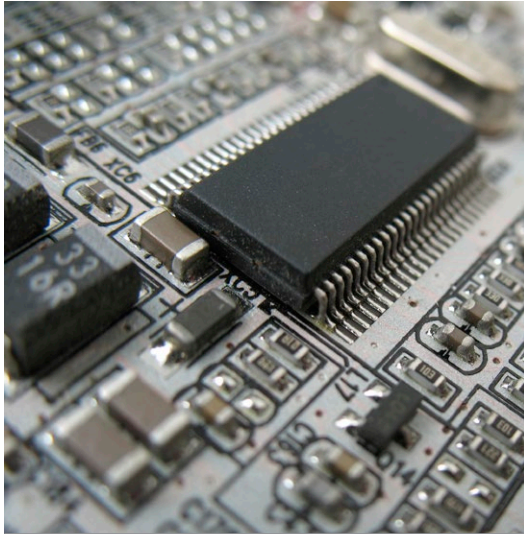
Consists of the following three modules: M9310A PXIe source output, M9301A PXIe synthesizer and M9300A PXIe frequency reference.

Technical overview	M9381A PXIe VSG	M9380A PXIe CW Source	M9421A PXIe VXT Vector Transceiver (see page 20 for more information)
Frequency range	1 MHz to 3 or 6 GHz	1 MHz to 3 or 6 GHz	60 MHz to 3.8 or 6 GHz
RF modulation bandwidth	40, 100 or 160 MHz	--	40, 80 or 160 MHz
RF switching speed	240 $\mu$ s, nominal	5 ms	2 ms
Phase noise (1 GHz, 20 kHz offset)	< -122 dBc/Hz, typical	< -122 dBc/Hz, typical	-112 dBc/Hz, typical (900 MHz, 10 kHz offset)
Output power	+19 dBm (at 1 GHz)	+19 dBm (at 1 GHz)	-120 to +20 dBm (+25 dBm settable)
Amplitude accuracy	$\pm$ 0.4 to 1 dB	$\pm$ 0.4 to 1 dB	$\pm$ 0.20 dB, typical
Modulation	AM, FM, PM, pulse, multitone	--	AM, FM, PM, pulse, multitone
EVM	-47.8 dB, nominal (WLAN 802.11ac, 160 MHz)	--	-45 dB, typical (WLAN 802.11ac, 160 MHz)
ACLR	-70 dBc, typical (W-CDMA 64 DPCH)	--	-70 dBc, typical (W-CDMA 64 DPCH)
Channel-to-channel synchronization	Timing alignment: $\leq$ 1 ns, nominal Phase alignment: $\leq$ 1°, nominal	--	--
Size	4-slot*	2-slot*	4-slot*

\* Add one slot for M9300A PXIe frequency reference.

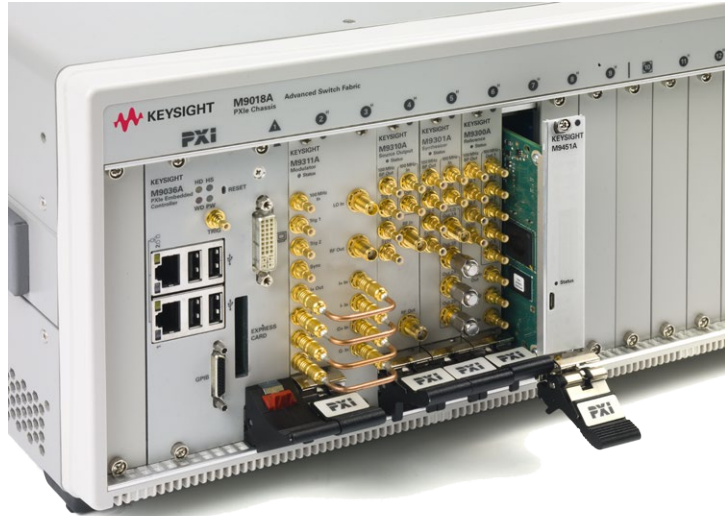
# 7 TIPS

## for PXI & AXIe test solutions



# 1 Reuse your chassis.

Select a PXI chassis with a large number of hybrid slots to support both PXI-1 hybrid and PXIe-style modules. PXIe provides improved throughput, point-to-point messaging, triggering and synchronization.



# 2 Minimize your system downtime.

Select a test platform that has longer duration standard and optional warranty and calibration plans, low failure rates, and flexible delivery choices providing you fast turnaround times when your equipment needs calibration or repair. This will help you minimize the disruption to your design or production schedules in times of unplanned equipment maintenance.

Measurement Report	
Keysight M9381A Performance Verification Tests	
Calibration Facility Keysight Technologies Inc. 15000 Redwood Street Hawthorne, CA 90247 USA	
Report Number	Test Date: 03 Sep 2015
Client Number	
Customer	
Model Number	USA
HW Utilize Identifier	M9001A
Order Number	1.4.020.0
Asset Number / Unique ID	N/A
Options Installed	B04, P16, M01, L0NT
HW Module Information	M9001A: HW10200012 M9001A: HW10100005 M9001A: HW10100006 M9001A: HW10100005
Calibration	Performance Verification All Completed See Individual Test Data See Individual Test Data
Version	Version: E.03.04
Created By	1509190276



# 3 You never know when you'll need a 7<sup>th</sup> harmonic.

Select a flexible test platform that easily incorporates different instruments for specific tests, such as searching for harmonics or spurs generated by the device which can affect the quality of the output signal. Out-of-band signals can cause network interference and FCC compliance issues. So, it's helpful to have the flexibility to include signal analyzers with higher frequency ranges earlier in the design phase to measure out-of-band spurs and harmonics. If, for example, the device supports LTE bands 40/41, you may want a signal analyzer that can measure the 3rd harmonic up to 8.1 GHz, or even the 7th harmonic up to 19 GHz.

## 4 Write code once, use it twice.

Share comparable measurement methods, algorithms and results with others in your organization using benchtop and PXI test instruments through common application measurement software. This guarantees consistent, reliable test-result validation – from R&D to manufacturing.

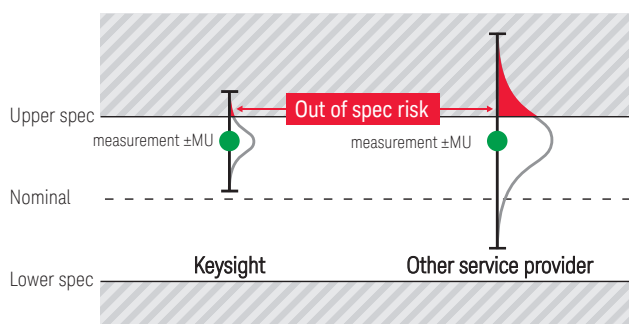
```
public void extractDpdModel(bool getMetric
{
    int numSamples = 0;
    double sampleRate = 0;
    int dataFormat = 0;
    double scaleFactor = 0;
    bool overload = false;
    long numBytes = 0;

    // Check to see if Peer to Peer is supp
    bool peer2PeerSupport = true;
    try
    {
```

## 5 Make measurements you can stand behind.

Electronic test equipment drifts over time and requires periodic performance verification and adjustments to continue to meet warranted specifications. The actual instrument accuracy you depend on is only as good as the measurement uncertainty of your last calibration. To avoid false pass/fail of your products, select test equipment that provides periodic calibration options with measurement uncertainties towards warranted specifications.

### Low measurement uncertainty (MU) matters



## 6 Get a running start with a reference solution.

Keysight Reference Solutions are market-validated hardware and software configurations for specific test applications. Use them to rapidly evaluate new test configurations or augment your existing test system with open source shortcuts.



## 7 Adapt quickly with license key upgrades.

We live in a dynamic world. Wireless standards continue to evolve with wider bandwidths, more antennas and greater synchronization needs. Selecting a PXI or AXIe platform that can evolve as test requirements evolve can help future-proof a test system, particularly if options can be quickly added with license key upgrades.

Learn how you can reduce test development time and speed your production tests with a free series of application notes

[www.keysight.com/find/pxi-fundamentals](http://www.keysight.com/find/pxi-fundamentals)

## PXI Switches

[www.keysight.com/find/pxi-switch](http://www.keysight.com/find/pxi-switch)

### Keysight M9101-03A PXI Multiplexer Switches



The PXI multiplexer modules deliver high-speed signal routing of many different channels to a single point, and are ideal for routing multiple analog signals to a measurement device in Automated Test Environments (ATE) or data acquisition systems.

Technical overview	M9101A	M9102A	M9103A
Channels	64	128	99
Switch type	2-wire, reed	1-wire, reed	2-wire, armature
Max volts (CAT 1)	100 Vrms		
Max current switch/carry	0.5 A/1.0 A	0.5 A/1.0 A	1 A
Max power (nom)	10 W	10 W	60 W
Bandwidth (nom)	5 MHz	5 MHz	1 MHz
Connectors	200 LFH		

### Keysight M9120-22A PXI Matrix Switches



The PXI matrix switch modules deliver medium- to high-density switching of multiple channels in a single instance. Any row can be connected to any column—ideal for routing multiple signals between the device under test and instruments.

Technical overview	M9120A	M9121A	M9122A
Channels	4x32	4x64	8x32
Switch type	2-wire, armature	2-wire, reed	1-wire, armature
Max volts (CAT 1)	100 Vrms	100 Vrms	100 Vrms
Max current switch/carry	2.0 A	0.5 A	2.0 A
Max power (nom)	60 W	10 W	60 W
Bandwidth (nom)	7.5 MHz	10 MHz	5 MHz
Connectors	78 Dsub block/cable	200 LFH block/cable	50 Dsub block/cable

### Keysight M9128A, M9146-49A PXI RF Switches



The PXI RF switch modules deliver high-performance, bi-directional switching up to 3 GHz, available in multiple configurations. Modern RF relay technology delivers low insertion loss and VSWR for excellent RF signal integrity and dynamic range when routing RF signals into your measurement equipment. Each switch path is carefully designed to ensure repeatable RF performance.

Technical overview			
Switch	Configuration	Insertion loss (typ)	Isolation (typ)
<b>RF 300 MHz, 50 Ω matrix switch</b>			
M9128A	8x12	2 dB	40 dB
<b>RF 3 GHz, 50 Ω multiplexer switches</b>			
M9146A	Dual 1x4	0.8 dB	45 dB
M9147A	Quad 1x4	1 dB	40 dB
M9148A	1x8	0.8 dB	40 dB
M9149A	1x16	1.2 dB	40 dB



## Keysight M9130-33A, M9135A

### PXI General Purpose Switches



The PXI general-purpose switch modules deliver fast, reliable switching in a variety of configurations. Cycle power to products under test, control indicator, and status lights, or actuate external power relays and solenoids with independent, single-pole, double-throw (Form C) or single-pole, single-throw (Form A) switches in a single PXI module. The line also includes a module that can handle up to 300/1250 W for switching heavy loads or power supplies.

Technical overview	Max volts (CAT 1) (typ)	Max switch/carry rating (typ)	Max power (nom)
M9130A 26-ch SPDT, Form C, armature	250 Vrms	2 A/2 A	60 W
M9131A 64-ch SPDT, Form C, reed	100 Vrms	0.25 A/1 A	3 W
M9132A 50-ch SPST, Form A, reed	100 Vrms	1 A/1 A	25 W
M9133A 100-ch SPST, Form A, reed	100 Vrms	1 A/1 A	25 W
M9135A 20-ch SPST, Form A, armature	250 Vrms/ 125 Vdc	5 A/5 A	300 W

## Keysight M9155-57C/CH40

### PXI Hybrid Switches DC to 26.5 or 40 GHz



M9155-57C/CH40 is a series of PXI microwave switch modules based on the PXI Hybrid platform. The M9155-57C operate from DC to 26.5. The M9155-57CH40 operate from DC to 40 GHz. Both series of switches come with guaranteed 0.03 dB insertion loss repeatability throughout the operating life.

Technical overview	M9155C M9155CH40	M9156C M9156CH40	M9157C M9157CH40
Size	1-slot	2-slots	3-slots
Frequency			
C Series	DC to 26.5 GHz		
CH Series	DC to 40 GHz		
Insertion loss	0.42 dB at 8 GHz	0.57 dB at 18 GHz	0.70 dB at 26.5 GHz
Insertion loss repeatability	< 0.03 dB		
Guaranteed operating life	5 million cycles	2 million cycles	2 million cycles
Typical operating life	10 million cycles	5 million cycles	5 million cycles
VSWR	1.35 at 8 GHz	1.45 at 18 GHz	1.70 at 26.5 GHz
Impedance	50 Ω		
RF connector			
C Series	3.5 mm (f)	SMA (f)	SMA (f)
CH Series	2.92 mm (f)		

## Keysight M9161D

### PXI Dual SP4T Solid State 50 MHz to 20 GHz



The M9161D is a one slot PXI Dual SP4T solid state switch module, operating from 50 MHz to 20 GHz. The M9161D has an unmatched ultra-long life cycle, fast switching speed and high isolation, all within a single slot enclosure.

Technical overview	
Size	1-slot
Insertion loss	8 dB at 10 GHz, 11.5 dB at 20 GHz
Isolation	100 dB at 9 GHz, 71.5 dB at 20 GHz
Return loss	7.5 dB at 20 GHz
RF connector	SMA(f)
Switching speed	60 μs

# PXI Vector Network Analyzers

[www.keysight.com/find/pxivna](http://www.keysight.com/find/pxivna)

## Keysight M9370-75A PXIe Vector Network Analyzers

[www.keysight.com/find/pxivna](http://www.keysight.com/find/pxivna)



The M9370-75A PXIe VNAs are full 2-port vector network analyzers that fit in just one slot. They perform fast, accurate measurements and can reduce your cost-of-test by letting you simultaneously characterize many devices – 2-port or multi-port – using a single chassis.

Each module is a completely independent analyzer that can also be cascaded to measure multi-port devices. Because all ports are fully synchronous, multiple ports can be measured simultaneously and multi-port error correction applied. As an example, a single chassis containing 16 M937xAs can be configured as eight 4-port VNAs, four 8-port VNAs or one 32-port VNA.

## Keysight M9485A PXIe Multiport Vector Network Analyzer

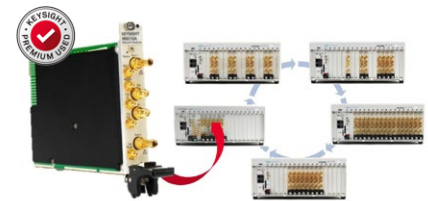
[www.keysight.com/find/pxivna](http://www.keysight.com/find/pxivna)

The M9485A supports three types of characteristic receivers and provides frequency offset mode, time domain analysis, basic RF pulse, gain compression and N-port calibrated measurements. Using the same measurement science and calibration as the trusted PNA/ENA network analyzers, the M9485A allows you to customize your test system, benefitting from PXI's speed, size and scalability.

The M9485A provides best-in-class performance with fast measurement speed and wide dynamic range. It also delivers low trace noise as well as high stability, output power and receiving power.



**High-performance multiport**  
True modular expands capabilities



**2-port VNA in 1 slot**  
Flexible, scalable, re-configurable

Technical overview	M9485A	M9370/71/72/73/74/75A
Frequency range	1 MHz to 9 GHz	300 kHz to 4, 6.5, 9, 14, 20, 26.5 GHz
Dynamic range, typ @ 10 Hz IFBW	160 dB	122 dB
Cycle time, typ (201 pts, 2-port cal)	5 msec	11.9 msec
Trace noise, typ @ 10 kHz IFBW	0.001 dBrms	0.001 dBrms
Source power max.	17 dBm	7 dBm
# of test ports	Up to 24-ports, 12-ports maximum per chassis	Up to 32-ports in a single chassis
Multi-site test	Yes, with same stimulus, one for one system	Yes, with independent stimulus one for 2-port VNA
Options	Option 551: N-port calibrated measurement, required for > 4-ports Option 010: Time domain Option 009: Frequency offset mode Option 025: Basic RF pulse Option 028: Noise figure Option 086: Gain compression	Option 551: N-port calibrated measurement, required for > 2-ports Option 010: Time domain Option 009: Frequency offset mode
Remote control command	Compatible with E5080A ENA network analyzer	Compatible with PNA network analyzers

[www.keysight.com/find/modular](http://www.keysight.com/find/modular)

## PXI Waveform Generators

[www.keysight.com/find/pxi-awg](http://www.keysight.com/find/pxi-awg)

### Keysight M3201-02A \*

#### PXIe FPGA Arbitrary Waveform Generators

[www.keysight.com/find/m3201a](http://www.keysight.com/find/m3201a)



\* AWG/digitizer combination units available (M3300/02A)

Part of the M3xxxA family of FPGA-programmable AWGs and digitizers, these AWGs allow non-programmers to customize and accelerate test while accessing the full performance of the FPGA. Real-time sequencing and multi-module synchronization provide phase coherency for complex, multi-channel configurations.

Technical overview	M3201A/M3300A/M3302A	M3202A
Size	3U <sup>1</sup>	3U, 1-slot
Resolution	16-bit	14-bit
Sample rate	500 MS/s	1 GS/s
Bandwidth	200 MHz (400 MHz IQ)	400 MHz (800 MHz IQ)
Channels	Up to 4 channels	Up to 4 channels
Impedance	50Ω	50Ω
Output voltage	±1.5V	±1.5V
Noise floor	-145 dBm/Hz, typical	-145 dBm/Hz, typical
Spurious-free dynamic range (SFDR)	68 dBc @ 120 MHz (0 dBm 50Ω), typical	54 dBc @ 160 MHz (0 dBm 50Ω), typical

1. M3201A AWG: 1-slot  
M3300A and M3302A combination AWG + digitizer: 2-slot

### Keysight M9336A

#### PXIe IQ Arbitrary Waveform Generator, 540 MHz

[www.keysight.com/find/m9336a](http://www.keysight.com/find/m9336a)



The M9336A is a wide-bandwidth arbitrary waveform generator (AWG) capable of creating the ideal waveforms for compliance testing of digital radios targeted for use with communication standards such as MB-OFDM ultra wideband, 802.11n, MIMO, and proprietary wideband formats.

Technical overview	
Size	1 slot 3U PXIe
Resolution	3 (single-ended or differential)
Channel impedance	50 Ω (single-ended) or 100 Ω (differential)
Amplitude resolution	16-bit
Maximum amplitude	2 Vpp (channel 1 & 2), 3.4 Vpp (channel 3) without corrections
User sample rate <sup>1</sup>	10 MSa/s to 1.28 GSa/s
Maximum channel bandwidth <sup>1</sup>	540 MHz
Maximum modulation (I/Q) bandwidth <sup>1</sup>	1080 MHz
Flatness (DC to 540 MHz)	±0.15 dB
SFDR (without harmonics)	>74 dBc (differential)
Sample clock	1.28 GSa/s (waveform is re-sampled with Keysight Trueform technology)

1. Option dependent

## Keysight M9330A PXI-H Arbitrary Waveform Generator

[www.keysight.com/find/m9330a](http://www.keysight.com/find/m9330a)



The M9330A is a high-resolution, wide-bandwidth arbitrary waveform generator (AWG) capable of creating the most realistic waveforms for radar, satellite, and frequency agile communication systems, thanks to its 15-bit vertical resolution and 1.25 GS/s sampling rate.

### Technical overview

Size	4-slots, 3U
Resolution	15 bits
Maximum sample rate	1.25 GS/s
Bandwidth	500 MHz per channel, 1 GHz modulated (nominal)
Impedance	50 $\Omega$ (nominal)
Output spectral purity	Harmonic distortion -65 dBc for DC to 500 MHz (nominal) Non-harmonic spurious -75 dBc for 1 kHz to 500 MHz (nominal)
Phase noise	1 kHz: -95 dBc/Hz (nominal) 10 kHz: -115 dBc/Hz (nominal) 100 kHz: -138 dBc/Hz (nominal) 1 MHz: -150 dBc/Hz (nominal)
Noise floor	-150 dBc/Hz (nominal)
Sample clock	Internal or external

## Keysight M9331A PXI-H Arbitrary Waveform Generator

[www.keysight.com/find/m9331a](http://www.keysight.com/find/m9331a)



The M9331A is a wide-bandwidth arbitrary waveform generator (AWG) capable of creating the ideal waveforms for compliance testing of digital radios targeted for use with communication standards such as MB-OFDM ultra wideband, 802.11n, MIMO, and proprietary wideband formats.

### Technical overview

Size	4-slots, 3U
Resolution	10 bits
Maximum sample rate	1.25 GS/s
Bandwidth	500 MHz per channel, 1 GHz modulated (nominal)
Impedance	50 $\Omega$ (nominal)
Output spectral purity	Harmonic distortion -50 dBc for DC to 500 MHz (nominal) Non-harmonic spurious -75 dBc for 1 kHz to 500 MHz (nominal)
Phase noise	1 kHz: -95 dBc/Hz (nominal) 10 kHz: -115 dBc/Hz (nominal) 100 kHz: -138 dBc/Hz (nominal) 1 MHz: -150 dBc/Hz (nominal)
Noise floor	-150 dBc/Hz (nominal)
Sample clock	Internal or external

## Additional PXI RF/ $\mu$ W & SMU Modules

[www.keysight.com/find/pxi](http://www.keysight.com/find/pxi)

RF and microwave modules benefit from additional or expanded capability when combined with accessory, signal attenuation, and signal conditioning modules as they are integrated into test system solutions. These modules provide the additional and enhanced capabilities required for the higher frequency applications.

**M9111A PXIe High-Speed Source/Measure Unit** offers high-speed testing for power amplifiers. Source faster and measure faster with superior DC source output stability and response.

**M9168C/E and M9169E PXI Programmable Step Attenuator** modules operate from DC to 26.5 or 50 GHz, respectively. Superior attenuation accuracy across a wide operating temperature range ensures precise measurements. The modules provide signal conditioning that enhance the measurement accuracy and flexibility of PXI RF and microwave test systems.

**M9170A PXI Attenuator/Switch Driver** module provides drive control for Keysight's RF and microwave step attenuators and electromechanical switches.

**M9300A PXIe Frequency Reference** module provides a 10 or 100 MHz reference for PXI solutions. The M9300A is a key PXI instrument in the M9380A CW source and M9381A vector signal generator.

**M9352A PXI Hybrid IF Amplifier/Attenuator** with 1 GHz analog bandwidth provides IF signal conditioning for use in multi-channel modular solutions.

**M9362AD01 PXIe Quad Downconverter** is well suited for wideband signal capture where multiple channels are required and can be used to synchronously capture up to 4 signals in up to 1.5 GHz bandwidth.

The **PXIe Optical Extenders, M9403A through M9408A**, offer end-to-end RF/microwave link for applications that require a long signal path. A frequency range of 300 kHz to 26.5 or 50 GHz can be transmitted distances greater than 1000 meters using single mode fiber optic technology. Antenna ranges or earth station application benefit from the elimination of distortion inherent in down conversion techniques.

**M9451A PXIe Measurement Accelerator** offers up to a 20x speed improvement in data handling for complex envelope tracking and digital pre-distortion measurements, as part of the RF PA/FEM characterization and test reference solution.

### IN THIS SECTION

M9111A PXIe high-speed source/measure unit

M9168C/E, M9169E PXI programmable step attenuators

M9170A PXI attenuator/switch driver

M9300A PXIe frequency reference

M9352A PXI hybrid amplifier/attenuator

M9362AD01 PXIe quad downconverter

M940xA PXIe optical extenders

M9451A PXIe measurement accelerator

### PRODUCTS WHERE THESE MODULES ARE INTEGRATED

M9300A integrated with:

- M9380A CW source (page 21)
- M9381A PXIe VSG (page 21)
- M9391A PXIe VSA (page 20)
- M9393A PXIe performance VSA (page 19)

M9169E an option for:

- M9393A PXIe performance VSA, option FRX (page 19)

M9451A PXIe measurement accelerator:

- PA/FEM reference solution (page 6)

## Keysight M9111A PXI High-Speed Source/ Measure Unit

[www.keysight.com/find/m9111a](http://www.keysight.com/find/m9111a)



The M9111A provides high-speed testing for power amplifiers. It delivers up to 18W of power at up to 13 V, ±1 A or up to 6V, ±3A. As part of the RF PA/FEM reference solution, the M9111A provides superior stability and output response:

- High-speed changes in voltage with fast settling times
- High-speed recovery with low voltage droop when DUT pulls pulses of current with sharp edges.

### Technical overview

Size	1-slot
DC output ratings	13 V ± 1 A or 6V ± 3 A, 18 W
Speed	Change voltage, stabilize and measure in < 1 ms
Measurement accuracy	
Voltage	0.05% + 1mV
Current, 3 A range	0.05% + 300 μA
Current, 1 A range	0.05% + 100 nA
Current, 100 μ range	0.05% + 10 nA

## Keysight M9168C/E, 69E PXI Programmable Step Attenuator

[www.keysight.com/find/pxiattenuator](http://www.keysight.com/find/pxiattenuator)



The M9168C/E and M9169E are programmable step attenuator modules operating from DC to 26.5 or 50 GHz with 0.03 dB insertion loss repeatability for each section throughout the 5 million cycles operating life. Their excellent attenuation accuracy across a wide operating temperature range, ensures precise measurement. They also provide signal conditioning that enhances the measurement accuracy and flexibility of PXI RF and microwave test systems.

### Technical overview

Technical overview	M9168C/E	M9169E
Size	2-slots	
Frequency	M9168C: DC to 26.5 GHz M9168E: DC to 50 GHz	DC to 50 GHz
Attenuation resolution	1, 5 and 10 dB step	2, 6 and 10 dB step
Repeatability	0.03 dB guaranteed	
Life cycle	5 million cycles per section (guaranteed)	
Maximum input power	1 W (+30 dBm) avg. 50 W peak, (10 μs max)	
Maximum reverse power	1 W avg. 50 W peak (10 μs max)	
RF connector	3.5 mm (f), SMA compatible 2.4 mm (f)	2.4 mm (f)

## Keysight M9170A PXI Attenuator/Switch Driver

[www.keysight.com/find/pxidriver](http://www.keysight.com/find/pxidriver)



The M9170A attenuator/switch driver module provides drive control for programmable attenuators and electromechanical switches. It is a PXI-hybrid compliant module, that comes with a full-featured graphical interface soft front panel (SFP) for easy control and trigger.

### Technical overview

Size	1-slot			
Voltage	+3.3V	+5V	-12V	+12V
Current	0.5A	30 mA (min) 5.6 A (max)	0	30 mA (min) 0.8 A (max)
Attenuator types	Accepts most attenuators available today			
Switch types	Accepts most switches available today			

## Keysight M9300A PXIe Frequency Reference

[www.keysight.com/find/m9300a](http://www.keysight.com/find/m9300a)



The M9300A PXIe frequency reference is a compact modular instrument that can be configured as part of the M9393A PXIe performance vector signal analyzer, M9391A PXIe vector signal analyzer, M9381A PXIe vector signal generator or M9380A CW source. One M9300A can support multiple modular instruments.

### Technical overview

Outputs	Five 100 MHz outputs One 10 MHz output Internal 10 MHz OCXO timebase output
---------	---

	Amplitude	Connectors	Impedance
100 MHz output	≥ 10 dBm	5 SMB snap-on	50 Ω, (nominal)
10 MHz output:	9.5 dBm, (nominal)	1 SMB snap-on	50 Ω, (nominal)
OCXO output:	11.5 dBm, (nominal)	1 SMB snap-on	50 Ω, (nominal)
Size	1-slot		

## Keysight M9352A PXI Hybrid Amplifier/ Attenuator

[www.keysight.com/find/m9352a](http://www.keysight.com/find/m9352a)



The M9352A is a 1-slot, 4-channel, PXI Hybrid IF amplifier/attenuator with 1 GHz analog bandwidth providing excellent IF signal conditioning for use in multi-channel modular solutions. Combine with the M9362AD01 PXI quad downconverter, up to four M9202A IF digitizers, and a local oscillator for wideband signal capture where multiple channels are required.

### Technical overview

Size	1-slot
Channels	4
Bandwidth	1 GHz analog
Attenuation Range	31.5 dB in .5 dB steps
Minimum Gain:	≥ 5 dB
Maximum Gain:	≥ 36 dB
Noise Figure	3 dB
Input TOI	+43 dBm

## Keysight M9362AD01 PXIe Quad Downconverter

[www.keysight.com/find/m9362a-d01](http://www.keysight.com/find/m9362a-d01)



The M9362AD01 is a PXIe 3-slot, 4-channel, coherent microwave downconverter with frequency coverage from 10 MHz to 50 GHz, along with 1.5 GHz of instantaneous bandwidth per channel. The M9362AD01 is well suited for wideband signal capture where multiple channels are required for applications such as multi-channel coherent signal analysis, radar, SIGNIT, ELINT, MASINT, EW signal capture and analysis, and RF and microwave recording and analysis.

### Technical overview

Size	3-slot
Operating range	10 MHz to 26.5, 40 or 50 GHz
Bandwidth	1.5 GHz per channel
Noise figure	24 dB, (nominal)
Impedance	50 Ω, (nominal)

## Keysight M9403-08A PXIe Optical Extenders

[www.keysight.com/find/pxi-  
opticalexten-  
ders](http://www.keysight.com/find/pxi-opticalexten-<br/>ders)



The M9403-08A optical extenders for Instruments can deliver your RF or microwave signal without the power loss of coaxial cables, without the unwanted mixing products of downconversion techniques, and with the isolation of fiber at distances up to and beyond 1000 meters.

### Technical overview

Frequency range	Option F26: 300 kHz to 26.5 GHz Option F50: 300 kHz to 50 GHz
Spurious free dynamic range	> 90 dB/Hz > 110 dB/Hz
Noise figure	Opt H01 (unamp): 26.5 GHz, 34 dB; 50 GHz, 42 dB Opt H02 (amp): 26.5 GHz, 8 dB; 50 GHz, 12 dB
Link gain	Option H01: > -30 dB Option H02: > -4 dB
M9406A USB optical data rate	1.5, (USB 1.0), 12, (USB 1.1) and 480 (USB 2.0) Mbps

### Optical link RF performance (M9403A, M9404A)

Min RF input level	-120 dBm
Max optimum RF input level	7 dBm (Option H01) -25 dBm (Option H02)

## Keysight M9451A PXIe Measurement Accelerator

[www.keysight.com/find/m9451a](http://www.keysight.com/find/m9451a)



The M9451A PXIe measurement accelerator with Option DPD, digital pre-distortion and envelope tracking gateway, shows what is possible when you combine state-of-the-art FPGA's with Keysight's trusted measurement expertise and PXIe's high-speed data handling. As part of Keysight's RF PA/FEM Characterization and Test, Reference Solution, the M9451A-DPD provides unprecedented performance for complex envelope tracking (ET) and digital pre-distortion (DPD) measurements required for testing modern power amplifiers and front-end modules. Achieve better than 20x speed improvement with closed/open loop DPD and ET measurements taking just tens of milliseconds and overall measurement times less than 70 msec.

### Technical overview

Bus interface and compatibility	PXI Express peripheral module (x1, x4, x8 PCIe specification v 2.1)
FPGA	Altera Stratix V "A7" (5SGXMA7K3F40C2)
Memory	4 GB DDR3 memory 2 independent DDR3 banks at 1200 MT/s (600 MHz) each



## AXIe Modular Products

[www.keysight.com/find/axie](http://www.keysight.com/find/axie)

High-performance AXIe products provide timing, triggering, and module-to-module data movement features that are important to the implementation of high-performance test and measurement systems used in aerospace defense, high-speed digital, high-energy physics, 400 GbE, semiconductor test and other industries.

AXIe products use horizontal configurations for minimal rack space and vertical for larger systems. The chassis and modules compliment LXI and PXI products and include PCIe and LAN interfaces that allow them to act like virtual PXI or LXI instruments.

The AXIe product portfolio includes mainframes and controller, as well as new modules that offer leading performance in their categories: high-speed arbitrary waveform generators (AWG), high-speed Bit Error Ratio Testers (BERTs), high-speed logic analysis modules, PCI Express Gen3 and MIPI D-PHY/M-PHY protocol analyzers.

### IN THIS SECTION

M9502A, M9505A, M9514A  
AXIe chassis

M9521A AXIe system module

M9537A AXIe embedded  
controller

M9703B/09A/10A digitizer

M8190A/95A/96A arbitrary  
waveform generators

M8020A/30A/40A High  
performance BERTs

M8061A Multiplexer

M8062A BERT front-end,  
32 GB/s

U4164A 4 Gb/s state mode  
logic analyzer module

U4301B PCIe Gen3 protocol  
analyzer

U4421A MIPI® D-PHY<sup>SM</sup>  
protocol analyzer/exerciser

U4431A MIPI M-PHY®  
protocol analyzer



M8040 64 GBaud high-performance BERT, M9537A embedded controller in a M9505A 5-slot AXIe chassis.

## Keysight M9502A, M9505A, M9514A

### AXIe Chassis

[www.keysight.com/find/axie-chassis](http://www.keysight.com/find/axie-chassis)



The M9502A, M9505A and M9514A AXIe 2-, 5-slot and 14-slot chassis are fully compatible with the AXIe 1.0 and 2.0 (M9514A only) specification.

Technical overview	M9502A	M9505A	M9514A
Size	2U	4U	14U
Number of slots	2	5	14
DC power supply output voltage, (nominal)	50 V	52 V	52 V
Total DC module power	400 W	1000 W	2800 W
System module type	Embedded with Gigabit LAN and x8 PCIe interfaces		M9521A AXIe system module
System module front panel connectors	X8 Gen2 PCIe, multiframe in/out, trigger in/out, clock in/out, and Gbit LAN		Two 8x Gen2 PCIe, multiframe in/out, trigger in/out, clock in/out, and Gbit LAN
Maximum power dissipation per slot	200 W		

## Keysight M9521A

### AXIe System Module

[www.keysight.com/find/m9521a](http://www.keysight.com/find/m9521a)



The M9521A AXIe system module is fully compatible with the AXIe 1.0 and 2.0 specifications. The one-slot module is used with the M9514A AXIe chassis and provides the required system communication and synchronization functions including six multi-purpose, synchronization and triggering ports and an external 10 MHz reference clock input/output. The high-performance AXIe provides Fabric 1 (Gen2 x4 lanes to each module slot) and Gigabit LAN switching and Dual Gen2 x8 PCIe interfaces for connecting the chassis to an external computer and other AXIe or PXIe chassis.

## Keysight M9537A

### AXIe Embedded Controller

#### 2.8 GHz Quad-Core

[www.keysight.com/find/m9537a](http://www.keysight.com/find/m9537a)



The high performance, one-slot M9537A embedded controller offers new capabilities such as AXIe-wide PCIe support, multiple 4K video outputs and optional high speed disk cache. The controller easily integrates into hybrid test systems using GP-IB, USB and LAN front panel interfaces. The Intel i7 quad-core process with Hyper-threading Technology makes it the perfect controller for complex, multi-tasking environments.

Technical overview	
Size	1-slot, AXIe module
CPU	Intel i7 6820EQ 2.8 GHz quad-core
Storage type and size	Front removable 2.5" SATA II 240 GB SSD
Memory	8 GB DDR4 RAM with 16 GB option
AXIe PCIe link configuration	Gen 3, x16 PCIe link
AXIe Ethernet fabric channel	10/100/1000BASE-T
Front panel connections	USB 3.0 (4), USB 2.0 (2), LAN 10/100/1000 (2), 4K-capable DisplayPort 1.2, GPIB

## Keysight M9703B, M9709A, M9710A

### High-Speed Digitizers

[www.keysight.com/find/m9703b](http://www.keysight.com/find/m9703b)

[www.keysight.com/find/m9709a](http://www.keysight.com/find/m9709a)

[www.keysight.com/find/m9710a](http://www.keysight.com/find/m9710a)



Keysight's AXIe digitizers provide high channel density, measurement fidelity and high throughput to build scalable acquisition systems with high channel count for fast, accurate measurements in a compact form factor. The M9703B 8-channel, 12-bit wideband digital receiver/digitizer offers optional real-time digital downconverter (DDC) for tuning and zooming on the analyzed signal, improving the dynamic range, capture time, and measurement speed. It also offers multi-channel, phase coherent streaming and recording. The M9710A 10-bit high-speed digitizer provides high dynamic range across four phase-coherent channels within a single card. Optimized response allows few hundred picoseconds pulse analysis. The M9709A 8-bit digitizer provides 32 synchronous channels within a single card. This digitizer also enables long acquisitions with its very large on-board memory of up to 16 GB.

Technical overview	M9703B	M9710A	M9709A
Size	1-slot	1-slot	1-slot
Resolution	12 bits	10 bits	8 bits
Channels	8 (4 interleaved)	4 (2 interleaved)	32
Max sample rate	1.6 GS/s (3.2 GS/s interleaved)	5 GS/s (10 GS/s interleaved)	1 GS/s
Max bandwidth	DC to 2 GHz (1.4 GHz interleaved)	DC to 2.5 GHz	DC to 500 MHz
Max acquisition memory	16 GB	8 GB	16 GB
On-board processing	(4x) Xilinx FPGA	(2x) Xilinx FPGA	(4x) Xilinx FPGA
Firmware	DGT, DDC, LDC, INT, FDK, TSR	DGT, INT	DGT
Applications	CB1, CB2, B01		

## Keysight M8190A, M8195A, M8196A

### Arbitrary Waveform Generators

[www.keysight.com/find/axie-awg](http://www.keysight.com/find/axie-awg)



From low-observable systems to high-density communications, testing is more realistic with precision arbitrary waveform generation. Now you can take reality to the extreme. A Keysight AWG is the source of greater fidelity, delivering high resolution and wide bandwidth—simultaneously. This unique combination lets you create signal scenarios that push your designs to the limit and bring new insights to your analysis.

Technical overview	M8190A	M8195A	M8196A
Size	2-slot	1-slot	1-slot
Channels	1 or 2	1, 2 or 4	1, 2 or 4
Sample rate	Up to 12 GSa/s	Up to 65 GSa/s	Up to 92 GSa/s
Resolution	12 bits to 12 GSa/s 14 bits to 8 GSa/s	8 bits	8 bits
Analog bandwidth	5 GHz	20 GHz	32 GHz
Transition times	50 ps (20/80)	18 ps (20/80)	9 ps (20/80)
Memory depth	Up to 2 GSa	Up to 16 GSa	Up to 512 kSa
Impedance	50 Ω (nom)	50 Ω	50 Ω

## Keysight M8020A High Performance J-BERT

[www.keysight.com/find/m8020a](http://www.keysight.com/find/m8020a)



Fast, accurate receiver characterization of single and multilane devices up to 16 and 32 Gb/s. The M8020A streamlines receiver test setup by providing the highest level of integration, ensures accurate and repeatable measurements by automating stressed eye calibration, and supports interactive link training for increased efficiency. The M8020A consists of M8041A, M8051A, M8061/2A modules, depending on configuration.

Technical overview	M8041A	M8051A	M8061/2A
Size	3-slot	2-slot	2-slot
Data rate	0.256 to 16.2 Gb/s	0.256 to 16.2 Gb/s	0.512 to 32 Gb/s
Description	J-BERT generator, analyzer, clock	J-BERT extension generator, analyzer	Mux/32 Gb/s front end
Channels	1 - 2	Extension to 3 - 4	1
Pattern memory	User definable 2 Gbit/ch, pattern sequencer, algorithmic PRBS, scrambler, coding		
Generator capabilities	Jitter injection (RJ,PJ,SSC, BUJ, Clk/2), ISI, 8-tap de-emphasis up to 20 dB, level interference (CMI and DMI)	Jitter injection, 8-tap de-emphasis, ISI	
Analyzer capabilities	Tunable CDR, CTLE equalizer, interactive link training for PCIe3		Tunable CDR, CTLE equalizer (M8062A only)
Measurements	BER, SER/FER, BERT Scan, jitter tolerance, output level/Q-factor		BER, jitter tolerance
Data connectors	3.5 mm	3.5 mm	2.4 mm

## Keysight M8040A 64 GBaud High Performance BERT

[www.keysight.com/find/m8040a](http://www.keysight.com/find/m8040a)



The M8040A is a highly integrated BERT for physical layer characterization and compliance testing. With support for PAM-4 and NRZ signals and data rates up to 64 GBaud it covers all flavors of 400 GbE standards. The M8040A BERT with its true error analysis provides accurate and repeatable results optimizing the performance margins of your devices.

Technical overview	M8045A	M8046A
Size	3-slot AXIe and remote head M8057A	1-slot
Symbol rate	2 GBaud to 64.8 GBaud	2 GBaud to 32.4 GBaud
Data format	NRZ and PAM-4	NRZ and PAM-4
Description	Pattern generator module with clock source	Error analyzer module
Channels per module	1 - 2	1
Pattern memory	2 Gbit/ channel and pattern sequencer	2 Gbit/ channel, pattern sequencer, masking
Generator capabilities	Jitter injection (RJ, PJ, BUJ, SSC, Clk/2), 4 tap de-emphasis, remote head, PAM-4 and NRZ	--
Analyzer capabilities and measurements	--	PAM-4 and NRZ, bit and symbol error analysis, capture, jitter tolerance
Data connectors	1.85 mm	2.4 mm

## Keysight U4164A 4 Gb/s State Mode Logic Analyzer Module

[www.keysight.com/find/u4164a](http://www.keysight.com/find/u4164a)



The U4164A 4 Gb/s state mode logic analyzer module combines reliable data capture up to 136 channels with powerful analysis and validation tools so you can quickly and confidently validate and debug high-speed digital designs operating at speeds up to 4 Gb/s.

### Technical overview

Size	1-slot AXIe module
Number of channels	136 (full channel mode) per module
Supported signal types	Single-ended and differential
Max state data rate	2.5 Gb/s on 136 channels, 4 Gb/s on 68 channels
Max state clock	2.5 GHz
Minimum state clock frequency	12.5 MHz (single edge), 6.25 MHz (both edges)
Minimum data valid window	100 ps
Minimum eye height	100 mV
Timing sample rate	2.5 GHz (full channel mode), 5 GHz (half channel mode), 10 GHz (quarter channel mode)

## Keysight U4301B PCIe Protocol Analyzer

[www.keysight.com/find/u4301b](http://www.keysight.com/find/u4301b)



Advanced PCIe protocol analysis supporting Gen3.1 with interposers to address all of your PCIe interfaces. The U4301B has an 8 GB buffer with advanced filtering, triggering, and analysis capabilities to support the latest in PCIe analysis needs. Test all link widths from x1 through x16 at all PCIe Gen3 speeds.

### Technical overview

Size	1-slot AXIe module
Number of lanes	Auto link width testing for x1 through x8 with a single module. Up to x16 with 2 modules
Memory depth	8 GB per module, 16 GB for x16 lanes
Supported speeds	Automatic detection 2.5 (Gen1), 5.0 (Gen2) and 8.0 (Gen3) GT/s
Power analysis	LTSSM support for LOs, L1, L1 substates (L1.1 and L1.2) and L2/3
Clocking	Internal, external with or without SSC, SRIS
Interposers	CEM slot up to x16, M.2 (M-key), U.2 (SFF-8639), mid-bus, and flying leads
Protocols	PCIe Gen3.0/3.1, NVMe, AHCI, SATA express, PQI

## Keysight U4421A, U4431A MIPI Protocol Analyzers

[www.keysight.com/find/dphy\\_analyzer](http://www.keysight.com/find/dphy_analyzer)

[www.keysight.com/find/mphy\\_analyzer](http://www.keysight.com/find/mphy_analyzer)



The U4421A MIPI D-PHY analyzer/exerciser for CSI-2 and DSI provides insight into mobile computing designs with necessary record length to simulate high-definition images and video traffic from a wide variety of device busses of varying signal performance. U4431A supports the MIPI M-PHY specification for next-generation mobile computing designs with analysis of time-correlated 8/10b data.

### Technical overview

	U4421A	U4431A
Lane width	Up to 4 lanes	Up to 4 lanes
Memory depth	1 GB standard Up to 16 GB optional	1 GB standard Up to 16 GB optional
Display protocol support	DSI v1.1, v1.02.00, v1.01.00, 1.20.00 DCS v1.1, v1.02.00, v1.01.00 SDF v1.0	
Camera protocol support	CSI 2 v1.01.00, 2 v1.00	
Max bit rate	1.5 Gbps to 10 Mbps	
Min bit rate	80 Mbps to 800 Kbps	

## Software & Programming

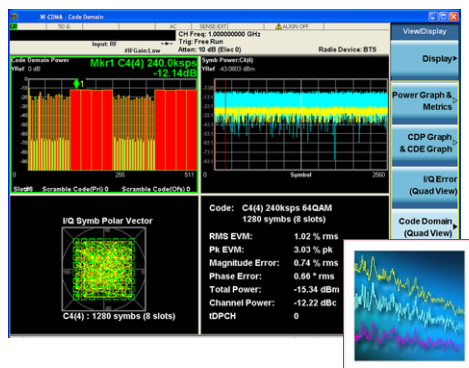
[www.keysight.com/find/software](http://www.keysight.com/find/software)

Speed your project's design to manufacturing cycle with Keysight's modular instruments combined with its portfolio of software. Select from trusted measurement applications for proven performance. These applications can be used with both benchtop and modular instruments to enable code re-use and measurement consistency from design to manufacturing. Enhance hardware capability with smart drivers to quickly connect, configure and ensure proper calibration before making measurements. We support multiple programming environments so that you can use the software of your choice.

**DOWNLOAD  
YOUR NEXT  
↓INSIGHT**

### X-Series Measurement Applications

[www.keysight.com/find/m90xa](http://www.keysight.com/find/m90xa)



X-Series measurement apps transform X-Series and modular signal analyzers into standards-based RF transmitter testers. They provide fast, one-button RF conformance measurements to help you design, evaluate, and manufacture devices and equipment.

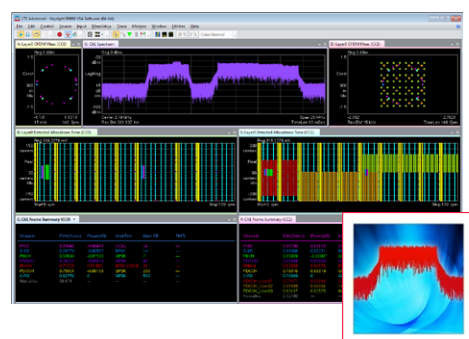
- Support multiple signal types including cellular, wireless connectivity, and general purpose
- Install at time of instrument purchase or order as an upgrade for an existing instrument
- Run applications such as MATLAB and 89600 VSA software inside modular signal analyzer

#### X-Series measurement applications for modular instruments

Cellular	LTE/LTE-Advanced FDD & TDD, W-CDMA/HSPA+, TD-SCDMA/HSPA, GSM/EDGE/EDGE Evo, cdma2000®/cdmaOne, 1xEV-DO
Wireless connectivity	WLAN 802.11a/b/g/n/ac, Bluetooth®
General purpose	Analog demodulation for AM, FM or PM signals, phase noise VXA vector signal analysis, pulse analysis

### 89600 VSA Software

[www.keysight.com/find/vsa](http://www.keysight.com/find/vsa)



The 89600 VSA software is a comprehensive set of tools for demodulation and vector signal analysis. These tools enable you to explore virtually every facet of a signal and optimize your most advanced designs.

- Measure *your* signal: supports over 75 signal types for cellular, wireless connectivity, aerospace, defense and general purpose applications
- Verify signal performance quickly with multiple simultaneous views in time, frequency and modulation domains
- Pinpoint the answers to signal problems with troubleshooting tools like coupled markers, advanced triggering, record and playback

#### Featured apps

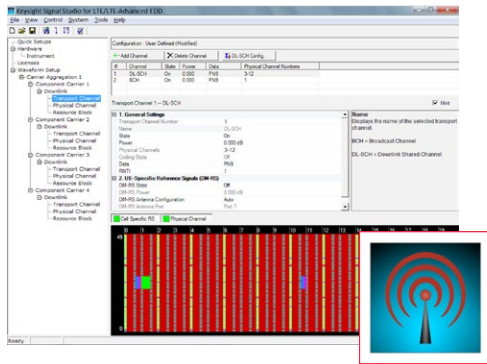
Complete offering available at [www.keysight.com/find/vsa](http://www.keysight.com/find/vsa)

Cellular	LTE/LTE-Advanced FDD & TDD, W-CDMA/HSPA+, GSM/EDGE/EDGE Evo, cdma2000®, 1xEV-DO, TD-SCDMA/HSPA, MIMO
Wireless connectivity	WLAN 802.11a/b/g/n/p/ac/ah, Bluetooth®, Mobile/Fixed WiMAX™, ZigBee, RFID, Wi-SUN
General purpose	Custom IQ, custom APSK, FSK, BPSK, QPSK, QAM, StarQAM, APSK, VSB, Custom OFDM, SOQPSK, AM/AM, AM/PM, channel quality measurements, spectrum analysis
Aerospace/defense	Pulse analysis, FMCW radar analysis, satellite group delay
Other	DOCSIS 3.1

[www.keysight.com/find/modular](http://www.keysight.com/find/modular)

## Signal Studio Software

[www.keysight.com/find/signalstudio](http://www.keysight.com/find/signalstudio)



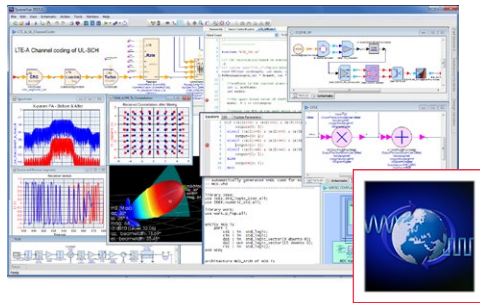
Signal Studio software, reduces the time you spend on signal simulation and simplifies signal creation. Its performance-optimized reference signals – validated by Keysight – enhance the characterization and verification of your devices.

- Generate application-specific test signals, at baseband, RF and microwave frequencies
- Configure signals in an easy-to-use, application-specific graphical interface
- Scale capability and performance to meet your specific test needs

Featured apps	Complete offering available at <a href="http://www.keysight.com/find/signalstudio">www.keysight.com/find/signalstudio</a>
Cellular	LTE/LTE-Advanced FDD & TDD, W-CDMA/HSPA+, GSM/EDGE/Evo, TD-SCDMA/HSDPA, cdma2000®/1xEV-DO, 5G, Envelope Tracking/DPD
Wireless connectivity	WLAN 802.11a/b/g/n/ac/ah, DFS Radar, <i>Bluetooth</i> ®, Mobile WiMAX™, Wi-SUN, Zigbee
Audio/video broadcasting	Broadcast radio, digital video
Aerospace/defense	NPR multi-tone stimulus, satellite group delay
General purpose	Filter bank multicarrier (FBMC), OFDM and IQ for 5G candidates, IQ quick steps for DAB, DVB-T/H, DVB-SH, ISDB-T, DVB-S2X APSK

## SystemVue Software

[www.keysight.com/find/systemvue](http://www.keysight.com/find/systemvue)

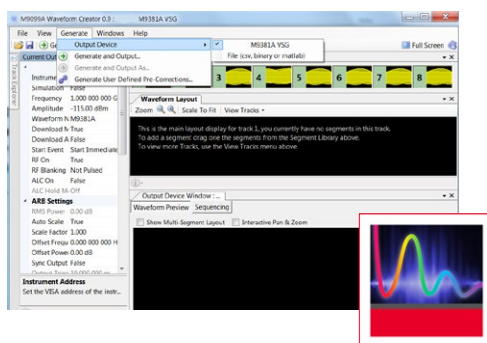


SystemVue is a system-level EDA environment that enables system architects and algorithm developers to innovate the physical layer of next-generation wireless and aerospace defense communications systems. Links to instruments for design verification measurements through SCPI and IVI interface over TCP/IP embedded directly within dataflow simulations, or from a command line. Re-use the same verification set-ups, scripts, test vectors and wireless IP as you move from algorithm into testware. Integrated with Keysight measurement applications such as 89600 VSA software, IO libraries and Command Expert.

Featured apps	Complete offering available at <a href="http://www.keysight.com/find/eesof-systemvue-configs">www.keysight.com/find/eesof-systemvue-configs</a>
Cellular	5G, LTE-Advanced, LTE, 3G, MIMO channel
Wireless	802.11a/ac/ad, <i>Bluetooth</i> ®, Zigbee, OFDM, DPD
Defense	GNSS, Digital modem, Radar

## Waveform Creator Software

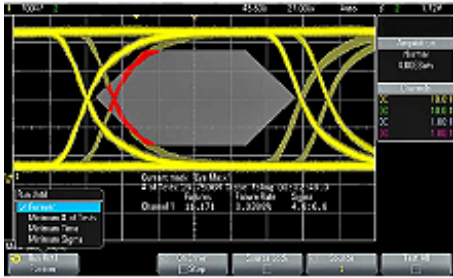
[www.keysight.com/find/m9099](http://www.keysight.com/find/m9099)



Waveform Creator is a modular software application focused on easy development of complex baseband and vector signals used in the validation and test of digital communications products. Built around a drag-and-drop graphical user interface, Waveform Creator allows quick development of multi-format, multi-track waveforms with waveform segments displaced in frequency and time. Its modularity supports multiple waveform types, including Signal Studio waveforms, and VSG/AWG instruments to be "plugged in" for current and future waveform types and instruments.

Featured plug-ins for digital modulation	Complete offering available at <a href="http://www.keysight.com/find/M9099">www.keysight.com/find/M9099</a>
89600 VSA recording	Perfect for capturing unknown or complex signals. Enables recording of signals captured with 89600 VSA for combination with other custom data segments
General purpose multi-tone	Single, 2-tone and multi-tone waveforms with configurable baseband filtering. Includes AM/FM/PM modulation
DOCSIS 3.1	Upstream and downstream waveforms with 89600 VSA set up files for demodulation and analysis
SystemVue	Enables import of waveforms created using SystemVue

## Software for M924xA PXIe Oscilloscopes



Expand your oscilloscope's capabilities with powerful applications. Hardware-based trigger and decode of low speed serial buses like I<sup>2</sup>C, SPI, RS232, and NFC. Licenses are also available to enable the integrated arbitrary waveform generator, perform hardware-based waveform mask, frequency response testing and more.

Model	Description
M9240AWGA	WaveGen 20 MHz Function/Arbitrary Waveform Generator
M9240FRAA	Frequency Response Analyzer
M9240MSKA	Mask Limit Testing
M9240PWRA	Power analysis application
M9240PWRA	I2C Triggering and Analysis (I2C)

For a complete list of applications, please visit [www.keysight.com](http://www.keysight.com)

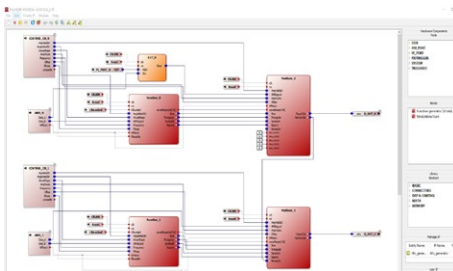
## Hardware Virtual Instrument Design Environment



[www.keysight.com/find/m3601a](http://www.keysight.com/find/m3601a)

Easily build real time decision making and implement multi-module synchronization and phase coherence onto the M3xxxA series of PXIe AWGs and digitizers' core capabilities. Graphical design environments make it easy to add the synchronization and customization required for emerging technologies, such as beamforming and quantum computing, without sacrificing the performance or the speed of the FPGA.

## Graphical FPGA Development Environment



[www.keysight.com/find/m3602a](http://www.keysight.com/find/m3602a)

Developed with the non-programmer in mind, the FPGA development environment is compatible with M3xxxA series of PXIe AWGs and digitizers. The graphical design environment makes it easy to add customization or insert custom algorithms required for emerging technologies, research and design, while accessing the full performance and speed of the FPGA.

## IO Libraries Suite 17

[www.keysight.com/find/iosuite](http://www.keysight.com/find/iosuite)

The IO Libraries Suite 17 auto discovers more instruments including those that physically connect to your PC (including GPIB, USB, and PXI) and many of those on your local LAN subnet. The PXI/AXIe chassis view in Connection Expert shows the chassis with details of the modules in each slot. IO Libraries Suite 17 makes it easy to connect and control across instrument platforms.

## Command Expert Software

[www.keysight.com/find/commandexpert](http://www.keysight.com/find/commandexpert)

Keysight's Command Expert is complementary software that provides fast and easy instrument control in PC application environments. Command Expert combines instrument commands, documentation, syntax checking and command execution all in one simple interface.

## MATLAB Software

[www.keysight.com/find/matlab](http://www.keysight.com/find/matlab)

MATLAB software, available for purchase from Keysight, extends the capabilities of Keysight modular hardware. Three MATLAB configurations are available from basic MATLAB capabilities that allow acquisition and analysis of data to full support for signal processing, communications, filter design and automated testing.



## Wireless Test Sets

[www.keysight.com/find/wts](http://www.keysight.com/find/wts)

### Keysight E6640A EXM Wireless Test Set for Wireless Devices

[www.keysight.com/find/exm](http://www.keysight.com/find/exm)

The EXM is scalable to meet your production needs and in sync with the latest cellular and WLAN chipsets. Better yet, the EXM delivers the speed, accuracy and port density you need to ramp up rapidly and optimize full-volume manufacturing. Go with the EXM and be ready to solve today and evolve tomorrow.

- Optimize multi-device test with up to 4 TRX channels per EXM
  - Cover up to 6 GHz with 160-MHz bandwidth
  - Create high-density multi-port test stations with two full-duplex and two half-duplex or four full-duplex ports per TRX
  - Independent source and analyzer for efficient use of test resources
- Test multi-format devices including 2G, 3G, 4G cellular and WLAN. See website for list of supported standards.
- Maximize throughput with raw hardware speed and advanced sequencing
- Increase first-pass yield with superior signal purity and measurement accuracy
  - Receiver EVM for 160 MHz 802.11ac:  $\leq -43$  dB (typical)
  - Absolute level accuracy, 380 MHz to 3.8 GHz:  $\leq \pm 0.2$  dB (typical)



The EXM wireless test set can test up to 4 devices at the same time.

### Keysight E6650A EXF Wireless Test Set for Femtocell

[www.keysight.com/find/exf](http://www.keysight.com/find/exf)

The EXF is the industry's first one-box tester dedicated to femtocell manufacturing, and it's validated with the latest cellular and WLAN chipsets. It also delivers the speed, performance and scalability you need to ramp up rapidly and lower your cost of test.

- Reduce overall test time with hardware and software elements optimized for speed
  - Handle high volumes with multi-DUT testing and parallel, sequential and hybrid methods in one chassis
  - Accelerate testing with up to four transmit/receive (TRX) channels: each is a complete vector signal analyzer/vector signal generator (VSA/VSG)
  - Create high-density multi-port test stations with two full-duplex and two half-duplex ports per TRX
  - Get ultra-fast processing and data transfers with a quad-core controller and high-bandwidth PXIe backplane
  - Test faster with advanced sequencing and single-acquisition multiple measurements (SAMM)
- Easily test multi-format femtocell 2/3/4G and WLAN designs. See website for list of supported standards.
- Migrate faster through compatibility with the X-Series signal analyzers and signal generators used in R&D
- Get up and running rapidly with validated cellular and WLAN chipsets



Keysight's EXF wireless test set for femtocell test.

## Index by Product Number

Model #	Description	Page	Model #	Description	Page
E2300	Command Expert software	40	M9170A	PXI attenuator/switch driver	30
E2094	IO Libraries Suite 17	40	M9181A	PXI basic DMM	15
E6640A	EXM wireless test set for wireless	41	M9182A, 83A	PXI high performance DMMs	15
E6650A	EXF wireless test set for femtocell		M9185A	PXI 8/16-channel isolated D/A converter	12
M3100A, 02A	PXIe 14-bit FPGA digitizers	16	M9186A	PXI isolated single channel voltage/current source	12
M3201A, 02A	PXIe FPGA arbitrary waveform generators	27	M9187A	PXI digital IO	14
M3300A, 02A	PXIe FPGA digitizer/AWG	16, 27	M9188A	PXI dynamic analog output, 16-channels	13
M3601A, 02A	HVI & FPGA software for PXIe FPGA digitizers, AWGs and combos	40	M9192A, 93A	Digital stimulus/response software	14
M8020A, 30A,	AXIe high performance J-BERT	36	M9195B	PXIe digital stimulus/response with PMU	14
M8040A	AXIe 64 GBaud high performance BERT	36	M9203A	PXIe 12-bit FPGA digitizer & wideband digital receiver	16
M8190A, 95A, 96A	AXIe arbitrary waveform generators	35	M9216A	PXI 32-channel high-voltage data acquisition	13
M9005A	PXIe 5-slot chassis, Gen1	10	M9217A	PXIe high-voltage, 20 MSa/s isolated digitizer	16
M9010A	PXIe 10-slot chassis, Gen3	9	M9240XXXA	PXIe oscilloscope software	40
M9018B	PXIe 18-slot chassis, Gen2	10	M9240A	PXIe AutoProbe for oscilloscopes	17
M9019A	PXIe 18-slot chassis, Gen3	9	M9241A-03A	PXIe oscilloscopes	17
M9021A	PCIe cable interface	11	M9290A	CXA-m PXIe signal analyzer	19
M9022A-24A	PXIe host modules, Gen3	11	M9300A	PXIe frequency reference	31
M9036A, 37A	PXIe embedded controllers	10	M9330A, 31A	PXI-H arbitrary waveform generators	28
M9048A, 48B, 49A	PCIe desktop PC adapter and host adapters	11	M9336A	PXIe IQ arbitrary waveform generators	27
M9063A	X-Series measurement applications: Analog demodulation	38	M9352A	PXI hybrid amplifier/attenuator	31
M9064A	VXA vector signal analysis		M9362AD01	PXIe quad downconverter	31
M9068A	Phase noise		M9370-75A	PXIe vector network analyzers	26
M9071A	GSM/EDGE/EVO		M9380A	PXIe CW source	21
M9072A	cdma2000®/cdmaOne		M9381A	PXIe vector signal generator	21
M9073A	W-CDMA / HSPA+		M9391A	PXIe vector signal analyzer	20
M9076A	1xEV-DO		M9393A	PXIe performance vector signal analyzer	19
M9077A	WLAN 802.11a/b/g/n/ac		M9403A-08A	PXIe optical extenders	32
M9079A	TD-SCDMA / HSPA		M9421A	PXIe VXT vector transceiver	20
M9080B	LTE/LTE-A - FDD		M9451A	PXIe measurement accelerator	32
M9081A	Bluetooth®		M9485A	PXIe multiport vector network analyzer	26
M9082B	LTE/LTE-A - TDD		M9502A	AXIe 2-slot chassis	34
M9099	Waveform Creator software	39	M9505A	AXIe 5-slot chassis	
M9101A-03A	PXI multiplexer switches	24	M9514A	AXIe 14-slot chassis	
M9111A	PXIe high-speed source/measure unit	30	M9521A	AXIe system module	34
M9120A-22A	PXI matrix switches	24	M9537A	AXIe embedded controller	34
M9128A, 46A, 47A, 48A, 49A	PXI RF switches	24	M9703B, 09A, 10A	AXIe digitizers	35
M9130A, 31A, 32A, 33A, 35A	PXI general purpose switches	25	N6171A	MATLAB software	40
M9155C-57C	PXI hybrid switch, DC to 26.5 GHz	25	N76xxB	Signal Studio software	39
M9155CH40-57CH40	PXI hybrid switch, DC to 40 GHz	25	U4164A	4 Gb/s state mode logic analyzer module	37
M9161D	PXI dual SP4T solid state, 50 MHz to 20 GHz	25	U4301B	PCIe protocol analyzer	37
M9168C, 68E, 69E	PXI programmable step attenuators	30	U4421A, 31A	AXIe MIPI protocol analyzers	37
			W1461BP	SystemVue software	39
			89601B	89600 VSA software	38

## Index by Product Description

Product description	Model #	Page	Product description	Model #	Page
89600 VSA software	89601B	38	Optical USB 2.0 – PXIe	M9406A, 07A	32
Amplifier/attenuator – PXI hybrid	M9352A	31	Oscilloscope & AutoProbe	M924xA	17
Arbitrary waveform generator – AXIe	M8190A, 95A, 96A	35	PC adapter – PCIe desktop PC adapter , host adapters	M9048A, 48B, 49A	11
Arbitrary waveform generator – PXI-H	M9330A, 31A	28	PCIe cable interface, system modules	M9021A, 22A, 23A, 24A	11
Arbitrary waveform generator – PXIe IQ	M9336A	27	Protocol analyzer – AXIe for MIPI	U4421A, 31A	37
Arbitrary waveform generator – PXIe FPGA, HVI & FPGA software	M3201A, 02A M3601A, 02A	27 40	Protocol analyzer – PCIe	U4301B	37
Attenuator – PXI programmable step attenuator	M9168C, 68E, 69E	30	Quad downconverter – PXIe	M9362AD01	31
Attenuator/switch driver	M9170A	30	Reference Solutions	--	
BERT - 64 GBaud AXIe	M8040A	36	– RF PA/FEM		6
Chassis: AXIe 2-slot	M9502A	34	– LTE/LTE-A multi-channel		7
AXIe 5-slot	M9505A		– 5G channel sounding		7
AXIe 14-slot	M9514A		– 5G waveform generation & analysis testbed		7
Chassis: PXIe 5-slot	M9005A	10	– 802.11ad testbed		7
PXIe 10-slot	M9010A	9	– Multi-channel antenna calibration		8
PXIe 18-slot	M9018B, 19A	10, 9	– Satellite signal monitoring		8
Command Expert software	E2300	40	– Automotive functional test		8
Controller – AXIe embedded controller	M9536A, 37A	34	– Radio test		8
Controller – PXIe embedded controller	M9036A, 37A	10	Signal Studio software	N76xxB	39
CXA-m PXIe signal analyzer	M9290A	19	Source – PXIe CW	M9380A	21
D/A converter – PXI 8/16-channel isolated	M9185A	12	Source/measure unit - PXIe	M9111A	30
Data acquisition module – PXI 32-channel high-voltage	M9216A	13	Switches – PXI dual SP4T solid state	M9161D	25
Digital IO control – PXI	M9187A	14	Switches – PXI general purpose	M9130A, 31A, 32A, 33A, 35A	25
Digital stimulus/response with PMU – PXIe	M9195B	14	Switches – PXI hybrid DC to 26.5 GHz	M9155C-57C	25
Digital stimulus/response software	M9192A, 93A	14	Switches – PXI hybrid DC to 40 GHz	M9155CH40- 57CH40	25
Digitizer – AXIe	M9703B, 09A, 10A	35	Switches – PXI matrix	M9120A-22A	24
Digitizer – PXIe 12-bit, FPGA wideband	M9203A	16	Switches – PXI multiplexer	M9101A-03A	24
Digitizer – PXIe 14-bit, FPGA	M3100A, 02A	16	Switches – PXI RF	M9128A, 46A, 47A, 48A, 49A	24
HVI & FPGA software	M3601A, 02A	40	System module – AXIe	M9521A	34
Digitizer – PXI high-voltage, 20 MSa/s	M9217A	16	SystemVue software	W1461BP	39
DMM – PXI basic	M9181A	15	VI source – PXI isolated single channel voltage/current source	M9186A	12
DMM – PXI high performance	M9182A, 83A	15	Vector network analyzers - PXIe	M9370-75A	26
Dynamic analog output – PXI 16-channel	M9188A	13	Vector network analyzer, multiport - PXIe	M9485A	26
Frequency reference – PXIe	M9300A	31	Vector signal analyzer – PXIe high performance	M9393A	19
IO Libraries Suite 17	E2094	40	Vector signal analyzer – PXIe	M9391A	20
J-BERT – AXIe high performance	M8020A, 30A	36	Vector signal generator – PXIe	M9381A	21
Logic analyzer – AXIe 4 Gb/s state mode	U4164A	37	Vector tranceiver (VXT) – PXIe	M9421A	20
MATLAB software	N6171A	40	Waveform Creator software	M9099	39
Measurement accelerator – PXIe	M9451A	32	Wireless test set	E6640A E6650A	41
Optical RF amplifier – PXIe	M9405A	32	X-Series measurement applications	Various	38
Optical receiver – PXIe	M9404A	32			
Optical RF reflectometer – PXIe	M9408A	32			
Optical transmitter – PXIe	M9403A	32			

## Evolving

Our unique combination of hardware, software, support, and people can help you reach your next breakthrough. **We are unlocking the future of technology.**



From Hewlett-Packard to Agilent to Keysight



**myKeysight**  
[www.keysight.com/find/mykeysight](http://www.keysight.com/find/mykeysight)  
 A personalized view into the information most relevant to you.

**Keysight Infoline**  
[www.keysight.com/find/Infoline](http://www.keysight.com/find/Infoline)  
 Keysight's insight to best in class information management. Free access to your Keysight equipment company reports and e-library.

**KEYSIGHT SERVICES**  
**Keysight Services**  
[www.keysight.com/find/services](http://www.keysight.com/find/services)  
 Our deep offering in design, test, and measurement services deploys an industry-leading array of people, processes, and tools. The result? We help you implement new technologies and engineer improved processes that lower costs.

**Three-Year Warranty**  
[www.keysight.com/find/ThreeYearWarranty](http://www.keysight.com/find/ThreeYearWarranty)  
 Keysight's committed to superior product quality and lower total cost of ownership. Keysight is the only test and measurement company with three-year warranty standard on all instruments, worldwide. And, we provide a one-year warranty on many accessories, calibration devices, systems and custom products.

**Keysight Assurance Plans**  
[www.keysight.com/find/AssurancePlans](http://www.keysight.com/find/AssurancePlans)  
 Up to ten years of protection and no budgetary surprises to ensure your instruments are operating to specification, so you can rely on accurate measurements.

**Keysight Channel Partners**  
[www.keysight.com/find/channelpartners](http://www.keysight.com/find/channelpartners)  
 Get the best of both worlds: Keysight's measurement expertise and product breadth, combined with channel partner convenience.

[www.keysight.com/find/modular](http://www.keysight.com/find/modular)

For more information on Keysight Technologies' products, applications or services, please contact your local Keysight office. The complete list is available at: [www.keysight.com/find/contactus](http://www.keysight.com/find/contactus)

### Americas

Canada	(877) 894 4414
Brazil	55 11 3351 7010
Mexico	001 800 254 2440
United States	(800) 829 4444

### Asia Pacific

Australia	1 800 629 485
China	800 810 0189
Hong Kong	800 938 693
India	1 800 11 2626
Japan	0120 (421) 345
Korea	080 769 0800
Malaysia	1 800 888 848
Singapore	1 800 375 8100
Taiwan	0800 047 866
Other AP Countries	(65) 6375 8100

### Europe & Middle East

Austria	0800 001122
Belgium	0800 58580
Finland	0800 523252
France	0805 980333
Germany	0800 6270999
Ireland	1800 832700
Israel	1 809 343051
Italy	800 599100
Luxembourg	+32 800 58580
Netherlands	0800 0233200
Russia	8800 5009286
Spain	800 000154
Sweden	0200 882255
Switzerland	0800 805353
	Opt. 1 (DE)
	Opt. 2 (FR)
	Opt. 3 (IT)
United Kingdom	0800 0260637

For other unlisted countries:  
[www.keysight.com/find/contactus](http://www.keysight.com/find/contactus)  
 (BP-06-08-16)

**DEKRA Certified**  
ISO 9001 Quality Management System

[www.keysight.com/go/quality](http://www.keysight.com/go/quality)  
 Keysight Technologies, Inc.  
 DEKRA Certified ISO 9001:2015  
 Quality Management System